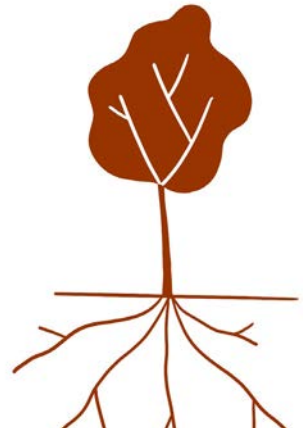


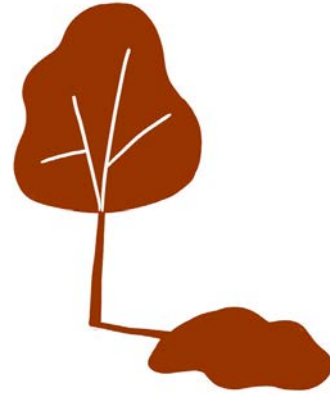
Deep Soil Zone Benefits



Healthy roots = healthy tree



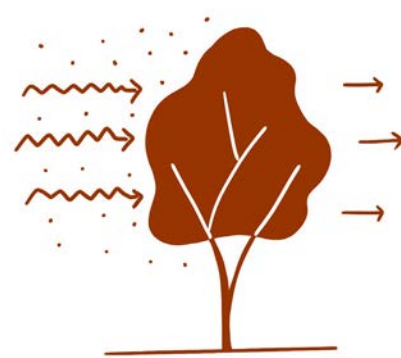
Enhance water filtration



Comfortable Micro-Climate + Reduction of Urban Heat Island Effect



Create Habitat



Improve Air Quality



Community Health through increased canopy coverage



Trees and gardens make a significant contribution to the ecology, character and amenity of neighbourhoods. They provide habitat for fauna, shade, storm water management and micro-climate benefits, as well as improve apartment outlook and privacy.

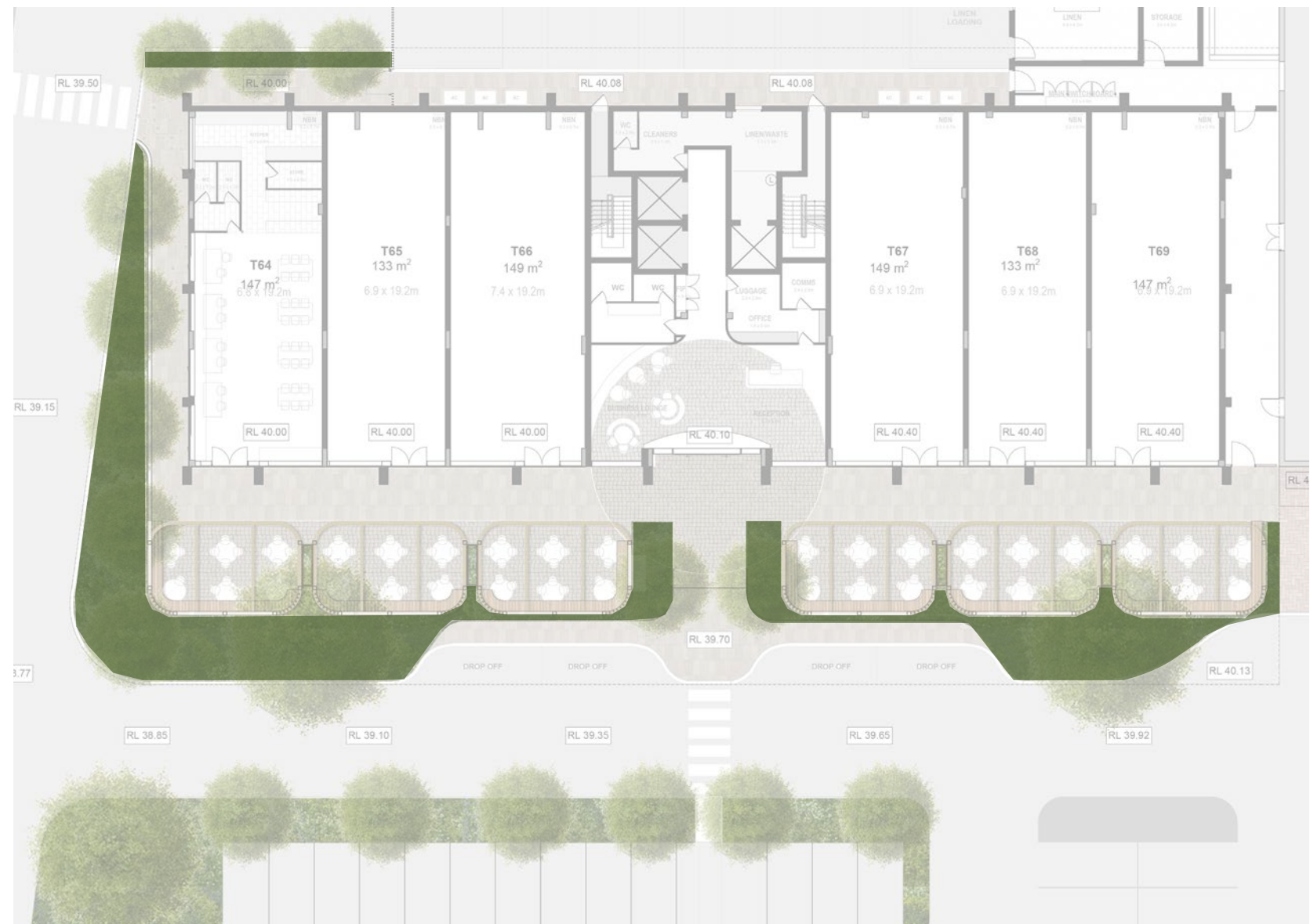
The provision of deep soil areas to support and sustain the development of tree canopy can also make a major contribution to the retention of existing trees. A deep soil area is an area of soil that is free of built structure and has sufficient area and depth to support tree growth and infiltrate rainwater. Site planning should seek to co-locate deep soil areas with existing trees on and adjacent to the site, and in locations best suited to the development of a viable tree canopy and landscaping.

Deep Soil Calculation

Summary

Deep Soil Total	
Total Site Area	2076 sqm
Deep Soil Planting required	208 sqm
Ground Floor DSA	225 sqm
Ground Floor DSA shortfall	0 sqm
Total DSA percentage	10%

 Deep Soil Planting



Tree Requirements

Tree Requirements	Area
Site Area	2076 sqm
Site wide tree requirements (>1,000m2)	2 large, & small trees to suit area
TOTAL TREE NUMBERS	Large trees = 2 total
	Small trees = 10 total

Legend

- Small tree (9m2 DSA per tree)
- Medium tree (36m2 DSA per tree)
- Large tree (64m2 DSA per tree)



See Design Studio
Landscape Architects

Please feel free to contact us with any inquires.

Joel Barker
0466 266 305
joel@seedesignstudio.com.au

Eoin Gladish
0423 150 244
eoin@seedesignstudio.com.au

seedesignstudio.com.au

