



# Attachment 7

Landscape Strategy





*This page has been left blank intentionally*



Local Structure Plan

Landscape & Open Space Master Plan

# Contents

## 01. Landscape Principles

## 02. Landscape Intent

## 03. Opportunities & Constraints

## 04. Landscape Strategy

- Landscape Master Plan
- Street Tree Master Plan
- Open Space Reference Plan
- Landscape Facilities Plan

## 05. Landscape Concept Plans

## 06. Streetscapes

## 07. Softscape Planting



## Document Control

| Date       | Revision | Author   | Version Description    | Reviewer | Review Date |
|------------|----------|----------|------------------------|----------|-------------|
| 19.01.2024 | A        | C.Taylor | Internal Review- DRAFT | C.Taylor | 19.01.2024  |
| 07.03.2024 | B        | C.Taylor | Client Issue           | C.Taylor | 07.03.2024  |
| 15.03.2024 | C        | C.Taylor | Final                  | C.Taylor | 15.03.2024  |
|            |          |          |                        |          |             |

considered

[kən'sɪdəd]

ADJECTIVE

*having been thought about carefully*

space

[speɪs]

NOUN

*the dimensions of height, depth, and width within which all things exist and move*



# 01. Landscape Principles

The Ranch Road (Precinct 8) Structure Plan in East Wanneroo has been planned to provide a network of interconnecting parklands, which connects to and enhances ecological & cultural corridors, wetlands, lakes, bushland and aims to contribute to the ecological and social fabric of the Ranch Road precinct and greater East Wanneroo community.

Being strategically located, the proposed public open space areas will provide accessibility and connectivity through the development whilst also playing an important role in protecting the sites natural assets which are unique to the Ranch Road locale.

The key Landscape Principles to be explored during the design phase shall be:

- A suburban neighbourhood carefully **integrated within a parkland setting and environment**, with the elements that define Ranch Road as a place, is an avenue that is to be explored and referenced in the design of the landscape.
- **Respecting the cultural and ecological corridors** and incorporating these into the Public Open Space (POS) network and adopting a programme of enhancement through revegetation and rehabilitation.
- Provide a **highly legible network of walking and cycle paths** linking the areas of public open space, schools, Mariginiup Lake, Little Mariginiup Lake within the Ranch Road precinct as well as connecting with the greater East Wanneroo district.
- **Retention of existing vegetation** via incorporation into public open space and Parklands.
- **Create street environments that can contribute to placemaking and activation.**
- Provision of **street tree planting** which provides amenity and upon maturity a continuous canopy of shade.
- **Natural features are retained** and enhanced within open space and streetscapes.
- **Views** to Mariginiup Lake & Little Mariginiup Lake to the south, and Adams Lake to the north are to be framed through the street layout, Parkland links and enhanced through sensitive and considered landscape design.
- Views into the site and outwards from the site are to be screened and framed where appropriate to retain a sense of parkland context.
- Appreciation that a balanced approach is required to ensure the social and recreational requirements of the future residents are balanced with the existing cultural & ecological site conditions and the engineering constraints imposed by the site.
- Provide connections to the existing Lake Mariginiup Bush Forever Parkland site to the south.
- Provide a **balanced variety of outdoor public space** for recreational and social opportunities appropriate to the size of the proposed community.
- Mitigate post development drainage flows through incorporation of upstream treatment within the open space network. Ensure drainage sites are treated in such a way so as to allow multiple public use.





---

# 02. Landscape Intent

## Proposed Planting in the Public Realm

The provision of planting in public open space areas and streetscapes serves to provide character, shade, interest, habitat and a point of reference in major streets or feature locations.

The locations of planting and types of vegetation will include;

- Predominantly native tree species are to be nominated throughout the Ranch Road Precinct.
- Exotic specimen, shade and historical/cultural reference trees are to be nominated in Pocket, Local and Neighbourhood parks as well as high profile street or entry locations.
- Smaller scale exotic trees may be nominated in feature locations and avenue plantings to secondary residential streets,
- Bushland and habitat regeneration in disturbed areas,
- Shrub planting to screening and to provide spatial definition,
- Groundcover planting to medians, verges and areas requiring clear views,
- Sedge planting to swales and basins,
- Irrigated grass to informal usable space and recreation areas,

The proposed mix of native species and exotic cultural plantings in feature locations will provide a variation of character and define feature points. In general POS planting shall be composed of no less than 95% native vegetation.

The selection and placement of species shall consider adjacent elements so as to limit future maintenance and public health and safety issues. It will promote the survival and health of the existing vegetation while also provide ongoing social and visual benefits. Items of consideration may include;

- Proximity to traffic sightlines to ensure suitable view corridors,
- Proximity and alignment to underground services to ensure no adverse impact,
- Seasonal influence of shade on adjacent facilities and areas,
- Passive solar benefits influencing adjacent built form and residential dwellings,
- Provision of seasonal visual colour,
- Provision of a seasonal food source to local fauna,
- Plant selection based on suitability to local climate, soils, rainfall and temperatures,
- Selection based on reduced maintenance, trimming, pruning, fertilising and watering.
- Develop a species palette with subtle variations through the development to tie in with identifiable communities and existing streetscapes.
- Buffer screening will be provided to residential or sensitive areas where required.
- Fringing vegetation to the surrounding areas is to be retained and protected.

Refer to section 07 for proposed species lists (note final species to be confirmed during the landscape subdivision approval process with the City of Wanneroo).

## Street trees

Street trees are a desirable design element to increase shade, promoting walkability and a pedestrian orientated Ranch Road precinct. The selection and placement of street trees shall vary dependant of the road hierarchy. Along major roads, street trees will form a strong visual avenue, and not impede traffic flow, safety or sightlines.

In residential streets, the roads may vary in character throughout the precinct; however, they are characterised as smaller scale pedestrian friendly environments. Therefore, street trees will be of a smaller scale, and take advantage of passive solar principles allowing summer shade and winter sun. As the road reserve widths may vary to allow for the retention of existing vegetation and the interconnection of the retained parklands and public open space network, it may be possible to allow for clustering or grouping of trees in the road reserve. This will be reviewed at the detailed design phase.

## Water Wise Planting

It is intended that local species shall be used where suitable to maximise local habitat advantage and minimise water dependence. Soil amendments will be used in order to reduce leaching and increase soil moisture holding capacity. All garden beds will be mulched to reduce water loss through evaporation.

## Irrigation Strategy

In general terms the project is committed to undertaking water sensitive urban design with minimal impact on existing groundwater and the preservation of water quality. The project is also committed to minimising the volume of water used for irrigation. The following principles are held.

- Minimise the extent of irrigation and the volume of water consumed
- Minimise the extent of irrigated turf
- Minimise the extent of long term irrigation usage to planted beds
- Use of hydrozoning
- Use of xeriscaping where practical.

Water application shall be based on seasonal need and be constructed of reliable, readily available and cost effective fittings, infrastructure and materials. Hydrozoning principles shall be incorporated at the detailed design stage.

All irrigation shall be installed to the local authority's standard specifications and industry best practice. Maintenance minimisation processes will apply in all circumstances. Irrigation shall be designed to incorporate stations that can be terminated as agreed upon planting establishment and maintenance handover to the City of Wanneroo in accordance with relevant policies.



# 02.

## Drainage/Stormwater

The development aims to utilise water sensitive urban design principles covering the following:

- Stormwater treatment in POS areas.
- Treatment areas to collect stormwater runoff.
- Dedicated first flush areas to capture sand and silt from development areas.
- Sedge and fringing vegetation to swales to provide a nutrient stripping function.

It is important that proposed treatment areas provide for multiple uses including recreation, storm water management and both the retention and creation of natural habitat.

## Drainage Treatments

All stormwater from the development will be directed into a system of treatment areas integrated and constructed within the public open space and / or adjacent road reserves. These devices will be sized to treat the flows from the small rainfall event in accordance with the principles of the Department of Water and Environmental Regulation (DWER) and greater stormwater strategy provided within the Ranch Road Local Water Management Strategy (Pentium Water, 2024).

As the East Wanneroo District Structure Plan (EWDSP) identifies all Conservation Category Wetlands (CCW) as Parklands, it is anticipated that the CCW's will be integrated with the drainage network incorporated into local open space areas, providing the opportunity to restore and enhance the biodiversity of these areas.

The following general principles will be adopted wherever possible in the landscape design to assist the drainage treatment of stormwater and preservation of groundwater for irrigation purposes.

- Promote the use of native plants with low water and fertiliser requirements.
- Promote landscape treatments sympathetic to climate conditions and prevailing site conditions – e.g. soil types, topography, environment, wetlands etc.
- Utilise “cluster or clump” plantings to provide useable shade areas and better use of reticulated water in preference to single item or symmetrical planting regimes.
- Irrigate grass and garden areas at appropriate time so as to reduce evaporative loss.
- Ensure that irrigation regime is responsive to prevailing weather conditions.



## Retained Vegetation

A key goal in the Ranch Road Local Structure Plan is the retention and protection of existing vegetation. Detailed flora surveys have been undertaken to assess the type and condition of the remnant vegetation across the precinct, with the results summarised within the East Wanneroo Precinct 8 Environmental Assessment Report (PGV Environmental, 2024) and the East Wanneroo Precinct 8 Wetland Buffer Assessment and Foreshore Strategy (PGV Environmental, 2024). This assessment has been utilised in determining the suitability of these areas as Parklands and areas of vegetation identified for retention within public open space. The retention of existing vegetation in defined locations caters for existing habitat, preserves natural assets and provides visual relief against the broader development area.

Whilst areas of the vegetation on site has suffered through the effect of the various past land uses and management, the areas of remnant vegetation offer positive outcomes if the development can be engineered to protect these areas. The retention of vegetation shall be maximised through the proposed location of public open space and the considered alignment of road reserves and lot boundaries.

Vegetation proposed for retention includes (but not limited to):

- Banksia Woodland TEC (Threatened Ecological Communities)
- TEC Floristic Community Type 20a ('Banksia attenuata woodlands over species rich dense shrublands')
- Vegetation rated as 'Good' condition or better

## Retention and Protection

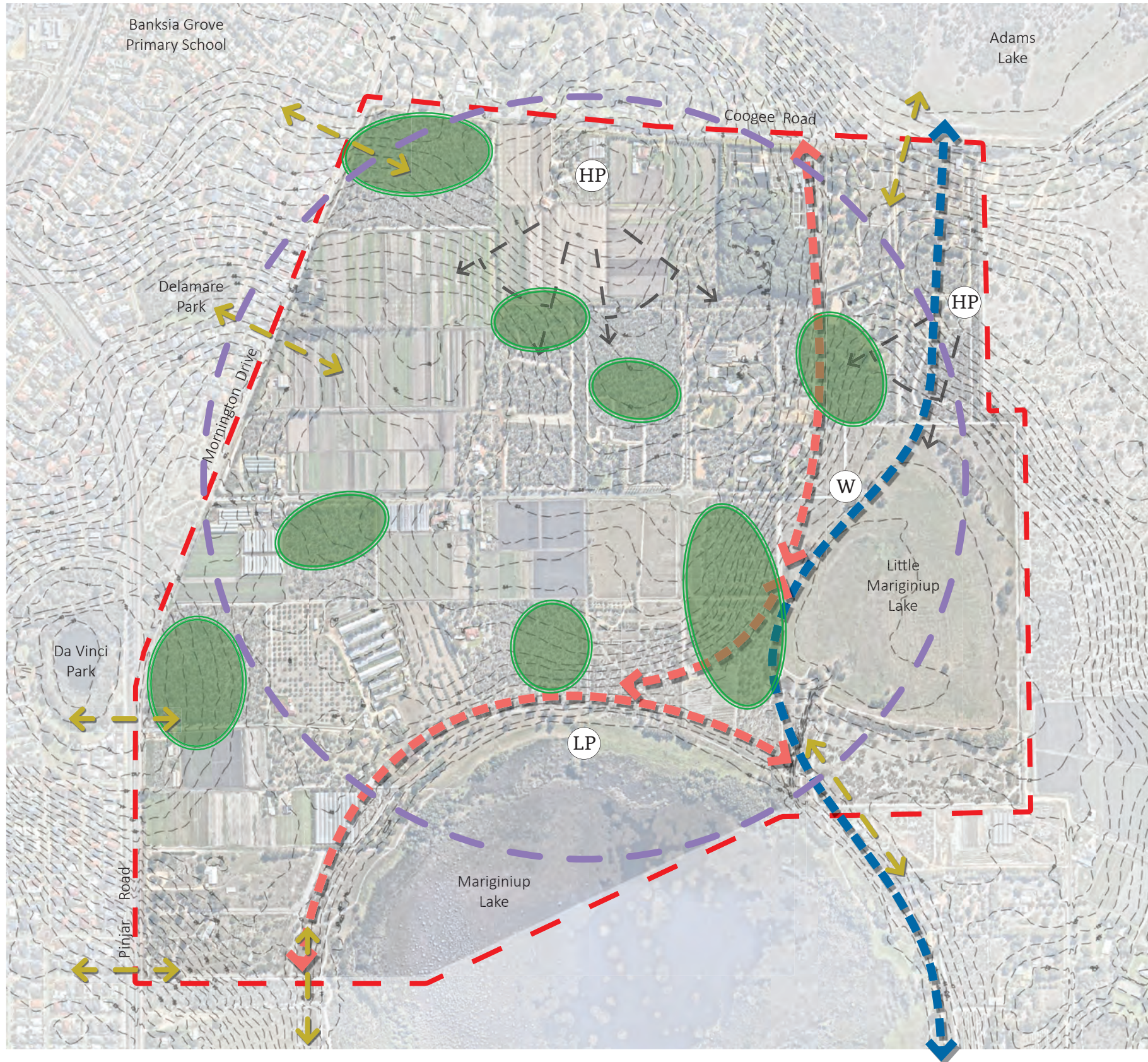
The retention and protection of defined existing vegetation shall occur during construction, following building works and in conjunction with maintenance. Retention and protection strategies shall include;

- Temporary fencing and signage to all retained areas and individual specimen trees
- Ripping or compaction within 3m of the drip line of existing trees to be prohibited.
- In order to restrict the spread of exotic weeds, the construction of clearly defined and easily maintained boundaries between retained vegetation and ornamental landscape may include such methods as footpaths, roads, trails and permanent fencing.





# 03. Opportunities & Constraints



Legend

- — — Precinct 8 Boundary
- HP High Point
- LP Low Point
- W Future Waste Water Pump Station
- — — EWDSR Proposed Parkland Link
- — — Proposed Parkland Link Realignment / Extension
- — — 800m Walk
- ← → Pedestrian Desire Connections
- — — Key Views / Sightlines
- Retained Vegetation



|                |                   |          |               |
|----------------|-------------------|----------|---------------|
| Drawing Number | QPG003 : LSP :O&C | Revision | C             |
| Date           | MAR 2024          | Scale    | 1:10,000 @ A3 |





# 04. Landscape Strategy



|                |                  |          |               |
|----------------|------------------|----------|---------------|
| Drawing Number | QPG003 : LSP :MP | Revision | C             |
| Date           | MAR 2024         | Scale    | 1:10,000 @ A3 |







*Agonis flexuosa*  
WA Peppermint Tree



*Eucalyptus gomphocephala\**  
Tuart



*Eucalyptus marginata*  
Jarrah



*Corymbia ficifolia*  
Red flowering gum



*Eucalyptus todtiana*  
Coastal blackbutt



*Eucalyptus torquata*  
Coral gum



*Eucalyptus torwood*  
Hybrid Coral Gum



*Eucalyptus victrix*  
Little ghost gum



*Eucalyptus woodwardii*  
Lemon-flowered gum



\* located in median island only

|                |                    |          |               |
|----------------|--------------------|----------|---------------|
| Drawing Number | QPG003 : LSP :STMP | Revision | C             |
| Date           | MAR 2024           | Scale    | 1:10,000 @ A3 |





# East Wanneroo Precinct 8 (Ranch Road) Open Space Reference Plan



### Public Open Space Type & Reference

- ① Public Open Space
- ⓐ Parkland

### Public Open Space Summary

- **Pocket Park**
  - Passive recreation function (places for relaxation & respite).
  - Shade trees with small breakout areas of irrigated turf.
  - Internal path network for bikes and scooters.
  - Internal path network connecting into the broader path network.
  - Bench seating & Nature Play elements.
- **Local Park**
  - Small scale recreation function with active & passive experiences.
  - Shade trees with areas of irrigated turf.
  - Areas for short dog walking and respite points.
  - Picnic settings, shelter, bench seating & shaded play space.
  - Stormwater drainage function.
  - Retention of existing trees & vegetation.
- **Neighbourhood Park**
  - Medium scale recreation function with active & passive experiences.
  - Incorporate accessible remnant bushland areas.
  - Potential to provide recreational, sports and nature area functions.
  - Shade trees with large open areas of irrigated turf.
  - Multiple seating, picnic settings and shelter opportunities.
  - Medium to large shaded play space with universal access equipment.
- **Parkland**
  - Consisting of wetland areas, bushland vegetation, open space and local parkland interconnected by streetscapes and Parkland Links with passive recreation function.
  - Accessible areas of remnant bushland and conservation areas.
  - Internal circulation paths, boardwalks & walk trails linking with external pedestrian and cycle paths.
  - Retention of existing trees & vegetation.
  - Opportunity to restore and enhance biodiversity via weed removal and revegetation.
  - Access for maintenance, service and emergency vehicles.
  - Opportunity for complementary landscaping including water wise garden bed and tree planting.
  - Informal seating & picnic settings opportunities.
  - Educational signage.

|                |                    |          |               |
|----------------|--------------------|----------|---------------|
| Drawing Number | QPG003 : LSP :OSRP | Revision | C             |
| Date           | MAR 2024           | Scale    | 1:10,000 @ A3 |





# 04. Landscape Strategy

Public Open Space Type & Reference

- 1 Public Open Space
- a Parkland

Landscape Facilities Legend

- Shelter & Picnic Setting
- Picnic Setting
- Bench Seating
- Play Space (major)
- Play Space (minor)
- Nature Play
- Multipurpose Sports Oval
- Passive Kickabout
- Fitness Node
- BBQ
- Drinking Fountain
- Dog Park
- Dog Walking
- Parkland Link
- Walking Trail
- Retained Tree(s)
- Retained Vegetation
- Revegetation
- Educational Signage
- Drainage Basin



|                |                   |          |               |
|----------------|-------------------|----------|---------------|
| Drawing Number | QPG003 : LSP :LFP | Revision | C             |
| Date           | MAR 2024          | Scale    | 1:10,000 @ A3 |





# 04.

## Public Open Space Typologies

The areas of public open space within the Ranch Road (East Wanneroo Precinct 8) Structure Plan have been separated into broad categories as identified within the EWSDP and the City of Wanneroo Local Planning Policy (LPP) 4.3: Public Open Space. Refer LPP 4.3 for specific treatments and design requirements.

The Ranch Road public open space typologies are as follows:

- Pocket Park
- Local Park
- Neighbourhood Park
- Parklands
- Streetscapes

These are described in detail as follows:

### Pocket Park:

Pocket parks are small parcels of POS (under 5,000m<sup>2</sup>) located throughout neighbourhoods that primarily serve an amenity and passive recreation function, while also providing valuable functions as community meeting places and places for relaxation & respite.

Pocket parks provide for a public 'backyard' and act as a shared open space extension for the residents within their catchment. They are open air respite points which are designed to function as small open space pocket that allows for green relief in residential scale passive spaces of shade trees with small breakout areas of irrigated turf for children to play, path network for bikes and scooters, areas for short dog walking and respite points for lunch breaks, fresh air and stretching.

Pocket parks are generally low maintenance, can incorporate significant trees and/or retained vegetation, may contain drainage infrastructure, and provide an important connectivity role as part of the greater POS network.

Treatment and infrastructure within a Pocket Park can typically include bench seating, small shaded play space, internal circulation paths, tree & existing vegetation retention (where possible), complete landscaping including areas of turf, native revegetation, water wise garden bed and tree planting. Irrigated areas are to be hydrozoned via a groundwater production bore.



### Local Park:

Local Parks provide open spaces (5,000m<sup>2</sup> to 1Ha) which service the regular small-scale recreation needs of the immediate surrounding residential population. The proposed Local Parks will provide attractive public open spaces that cater for a variety of active and passive recreational experiences that will have a positive impact on the quality and efficiency of the public realm. Additionally, they provide resting places, shelter from the elements and allow for passive recreational activities such as dog walking, informal children's play and relaxation.

Local Parks provide opportunities to reflect local character and create a sense of place through retention of significant trees and vegetation, cultural, ecological and physical landmarks.

They are typically located within 400m (5min walk) from other open space areas and can be located on the greater pedestrian path network to maximise access and pedestrian connectivity throughout neighbourhoods and with adjacent public open space. This along with their locations adjacent to residences, maximises passive surveillance in the surrounding area.

Local Parks often play a drainage function in the form of drainage basins and swales as part of the urban water management strategy and while performing a drainage function, these can also aid in the enhancement of a sense of place.

Treatment and infrastructure within a Local Park can typically include bench seating, a shaded play space, picnic shelter and settings, internal circulation paths, increased hardscape areas, tree & existing vegetation retention (where possible), complete landscaping including areas of turf, native revegetation, water wise garden bed and tree planting. Irrigated areas are to be hydrozoned via a groundwater production bore.





# 04.

## Neighbourhood Park:

Neighbourhood Parks are located throughout the development (1 to 7ha in size) and are similar to local parks but are generally larger and able to provide for recreation & informal active pursuits simultaneously.

They are typically located central to the catchment (within 800m of most dwellings) to maximise accessibility, they are a destination for the local community and may incorporate accessible remnant bushland or conservation areas. They may also serve a recreational, sports or nature area function, provides local residents with areas of turf and planting for kick-about play and passive uses. Their locations adjacent to residences, maximise passive surveillance and may be collocated with primary school facilities to upgrade school playing field to senior capacity or create a community hub.

The Neighbourhood Parks within the Ranch Road precinct includes the integration of areas of retained vegetation and proposed drainage functions.

The landscape treatment and infrastructure within a Neighbourhood Park can typically include multiple seating opportunities, picnic settings and shelters, bbq facilities, drink fountains, medium to large shaded play space with Universal access play equipment, internal circulation paths linking with external pedestrian and cycle paths, security lighting and access for maintenance, service and emergency vehicles.

Neighbourhood Parks include tree & existing vegetation retention (where possible), complete landscaping including areas of turf, native revegetation, water wise garden bed and tree planting. Irrigated areas are to be hydrozoned via a groundwater production bore. Incorporating a single playing field maybe considered by the City of Wanneroo within a Neighbourhood Park.



## Parkland:

The Ranch Road Precinct provides for a network of Parklands consisting of wetland areas, bushland vegetation, informal active open space and local Parkland interconnected by a Parkland Link to the east, connecting Mariginiup Lake and Little Mariginiup Lake with Adams Lake to the north. The Parklands are intended to be a network of multifunctional natural environments and landscaped spaces promoting nature and biodiversity conservation, active recreation, cultural and social interaction and educational functions.

Parkland areas within the Ranch Road Precinct consist of the following sub-categories:

- **Local Parkland** - land currently protected as Parks and Recreation reserves in the Metropolitan Region Scheme (MRS) and includes Conservation Category Wetlands (Lake Mariginiup and Little Lake Mariginiup)
- **Proposed Parks & Recreation Reserves**- new areas to be reserved for Parks and Recreation in the MRS.
- **Parkland Links**

## Local Parkland

Local Parklands includes all existing local reserves as Parkland, as these areas are established reserves and contribute to the network of parkland links. These existing Parklands are located adjacent to the Lake Mariginiup and Little Lake Mariginiup Conservation Category Wetlands. They contain lake foreshore areas which are highly scenic environments, providing a range of environments from heavily forested wetland vegetation to open flat areas with long views.

There is the opportunity to restore and enhance their biodiversity via weed removal and revegetation and in addition to providing a nature area function with ecological and cultural links, they can also serve as an informal recreational function providing local residents with areas of turf and planting for kick-about play and passive uses.

The landscape treatment and infrastructure within a Local Parkland can typically include multiple seating opportunities, picnic settings and small shelters, bbq facilities, drink fountains, medium shaded play space with universal access play equipment, internal circulation paths linking with external pedestrian and cycle paths, boardwalks, walk trails, educational signage and access for maintenance, service and emergency vehicles.

Local Parkland includes tree & existing vegetation retention, complementary landscaping including areas of turf, native revegetation, water wise garden bed and tree planting. Pockets of irrigated areas are to be hydrozoned via a groundwater production bore.





# 04.

## Proposed Parks and Recreation Reserves

Proposed Parks and Recreation Reserves are various pockets of remnant vegetation which have been identified as a high priority for protection as these sites are likely to contain:

- Threatened (or potentially threatened) Ecological Communities
- Carnaby Cockatoo foraging habitat
- Representation of the regional vegetation complexes of Karrakatta Central and South and Pinjar

The landscape treatment and infrastructure within these Parks and Recreational Reserves will be of a conservation intent with external pedestrian paths, walk trails along existing tracks, educational signage and access for maintenance, service and emergency vehicles.

Key design outcomes in Parklands include;

- Bushland vegetation is protected and enhanced in designated MRS reservations or as part of local reservations, carefully integrated with the surrounding urban environment.
- Walk trails through bushland provide for public enjoyment of the natural environment.
- Significant wetlands are protected and enhanced for their environmental and biodiversity value, and serve an important drainage function.
- Lake foreshore areas are open to public enjoyment with access from the road network.
- Key foreshore areas are enhanced and appropriately treated to provide for recreational activity.
- Regional vegetation complexes are rehabilitated and extended as part of the management of foreshore areas.
- Appropriate areas are utilised for environmental education.
- Aboriginal heritage values are protected as part of the regeneration of wetlands.



## Parkland Links

Parkland Links are identified as ecological and cultural linkages throughout the Ranch Road precinct (and greater East Wanneroo Development Area). The proposed subdivision provides an opportunity to create a link connect the lakes, wetlands, remnant vegetation and proposed POS & Road Reserves.

The amenity and connectivity of these corridors provides for district-wide cycling, pedestrian movement and nature-based education. The Parkland Links comprises of a mixture of Bush Forever, Public Open Space and landscaped streetscapes that provide within the urban environment a neighbourhood promoting a mature tree canopy and extensive landscaping within the corridor or road reserve.

The proposed Parkland Link through the eastern extent of the site (the Pinelake Trail Parkland Link), provides for an important connection linking the Ranch Road precinct with the Lake Mariginiup precinct (07) to the south, Lake Adams precinct (09) to the north and Central Mariginiup precinct (15) to the east. The north / south Parkland Link provides an interconnected pedestrian and cycle path network between Lake Mariginiup, Little Lake Mariginiup and Adams Lake.

Key design outcomes in Parkland Links include;

- Parkland Links are connected by Bush Forever sites, public open space & landscaped boulevards and accommodate uninterrupted pedestrian/ cyclist movement.
- They maintain and enhance ecological linkages through the area.
- Linear parks follow topographic features and link up patches of remnant vegetation.
- Landscaped Boulevards contain mature tree canopy and landscaping within a wide median or verge.












# East Wanneroo Precinct 8 (Ranch Road) POS 2 (Pocket Park)

## 05. Landscape Concept Plans



-  Picnic Setting
-  Bench Seating
-  Play Space (minor)
-  Nature Play
-  Dog Walking
-  Drainage Basin
-  Passive Kickabout

### OPEN SPACE TYPOLOGY

Pocket Park

**SIZE** (Excluding Road Reserve)  
4,028m<sup>2</sup>

### FUNCTIONS

Include by not limited to;

- Passive recreation function (places for relaxation & respite).
- Shade trees with small breakout areas of irrigated turf.
- Internal path network for bikes, scooters and connecting into the broader path network.
- Areas for short dog walking and respite points.
- Bench seating & Nature Play elements.
- Stormwater drainage function.
- Sense of Place, capturing historical and cultural character.
- Retention of existing trees and vegetation.
- Revegetation of native planting.
- Waterwise native planting with planting design to be hydrozoned according to irrigation requirements.

### DRAINAGE INFORMATION

**BASIN ID - B3**

#### FIRST 15mm BASIN

|                             |     |
|-----------------------------|-----|
| Side Slopes:                | 1:3 |
| Total Depth (m):            | 0.3 |
| Volume (m <sup>3</sup> ):   | 50  |
| Top Area (m <sup>2</sup> ): | 190 |

#### 20% AEP Basin

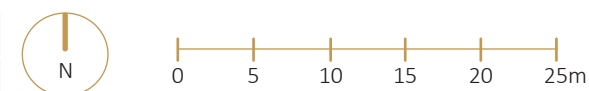
|                             |      |
|-----------------------------|------|
| Side Slopes:                | 1:6  |
| Total Depth (m):            | 0.54 |
| Volume (m <sup>3</sup> ):   | 191  |
| Top Area (m <sup>2</sup> ): | 680  |

#### 1% AEP Basin

|                             |      |
|-----------------------------|------|
| Side Slopes:                | 1:6  |
| Total Depth:                | 1.2  |
| Volume (m <sup>3</sup> ):   | 785  |
| Top Area (m <sup>2</sup> ): | 1142 |



|                |                     |          |            |
|----------------|---------------------|----------|------------|
| Drawing Number | QPG003 : LSP : POS2 | Revision | C          |
| Date           | MAR 2024            | Scale    | 1:500 @ A3 |

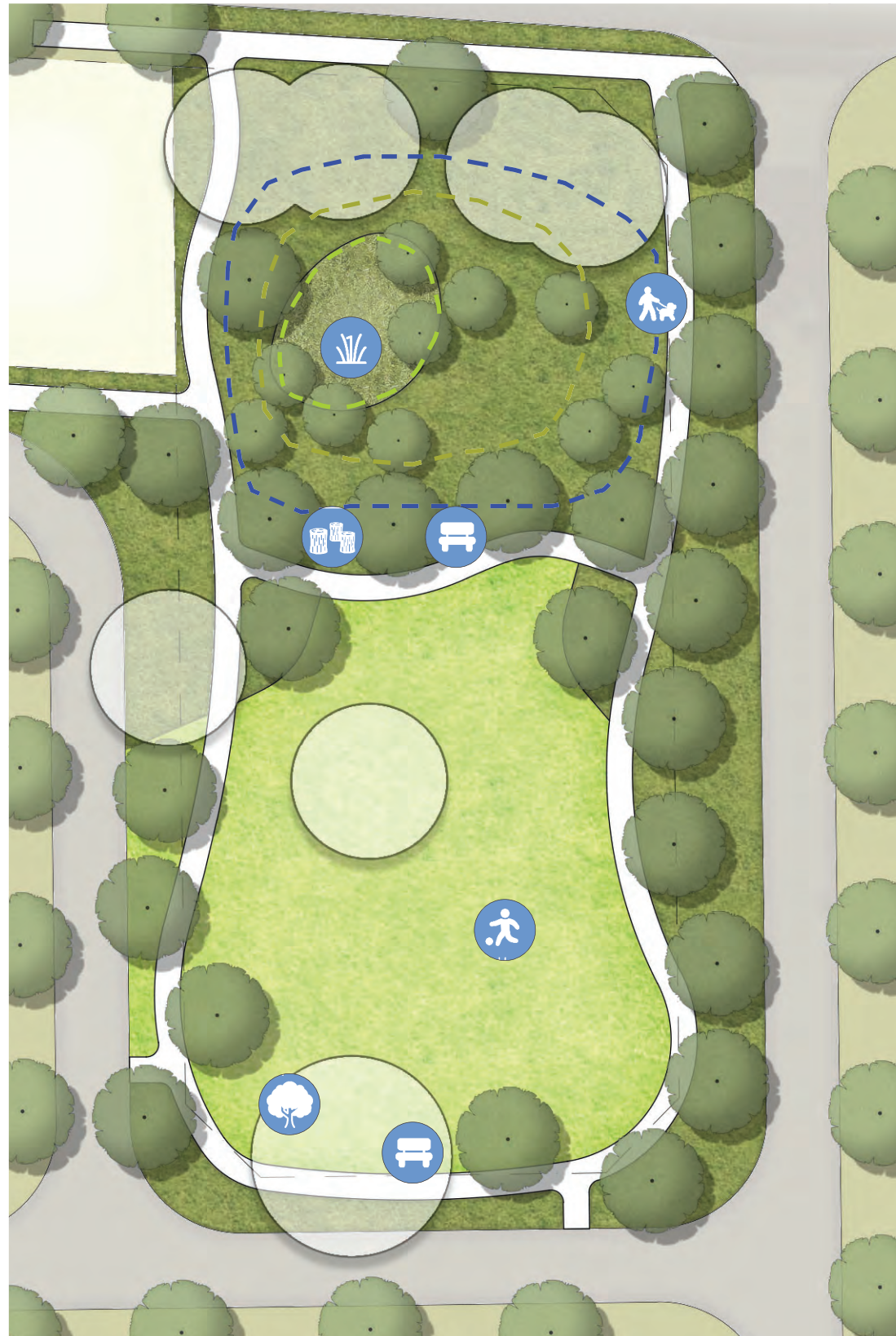




# East Wanneroo Precinct 8 (Ranch Road)

## POS 3 (Pocket Park)

05.



-  Bench Seating
-  Retained Tree(s)
-  Nature Play
-  Dog Walking
-  Drainage Basin
-  Passive Kickabout

### OPEN SPACE TYPOLOGY

Pocket Park

**SIZE** (Excluding Road Reserve)  
3,498m<sup>2</sup>

### FUNCTIONS

Include by not limited to;

- Passive recreation function (places for relaxation & respite).
- Shade trees with small breakout areas of irrigated turf.
- Internal path network for bikes, scooters and connecting into the broader path network.
- Areas for short dog walking and respite points.
- Bench seating & Nature Play elements.
- Stormwater drainage function.
- Sense of Place, capturing historical and cultural character.
- Retention of existing trees and vegetation.
- Revegetation of native planting.
- Waterwise native planting with planting design to be hydrozoned according to irrigation requirements.

### DRAINAGE INFORMATION

**BASIN ID - B4**

#### FIRST 15mm BASIN

|                             |     |
|-----------------------------|-----|
| Side Slopes:                | 1:3 |
| Total Depth (m):            | 0.3 |
| Volume (m <sup>3</sup> ):   | 43  |
| Top Area (m <sup>2</sup> ): | 164 |

#### 20% AEP Basin

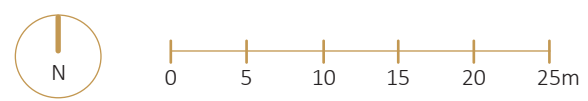
|                             |      |
|-----------------------------|------|
| Side Slopes:                | 1:6  |
| Total Depth (m):            | 0.54 |
| Volume (m <sup>3</sup> ):   | 148  |
| Top Area (m <sup>2</sup> ): | 550  |

#### 1% AEP Basin

|                             |     |
|-----------------------------|-----|
| Side Slopes:                | 1:6 |
| Total Depth:                | 1.2 |
| Volume (m <sup>3</sup> ):   | 633 |
| Top Area (m <sup>2</sup> ): | 950 |

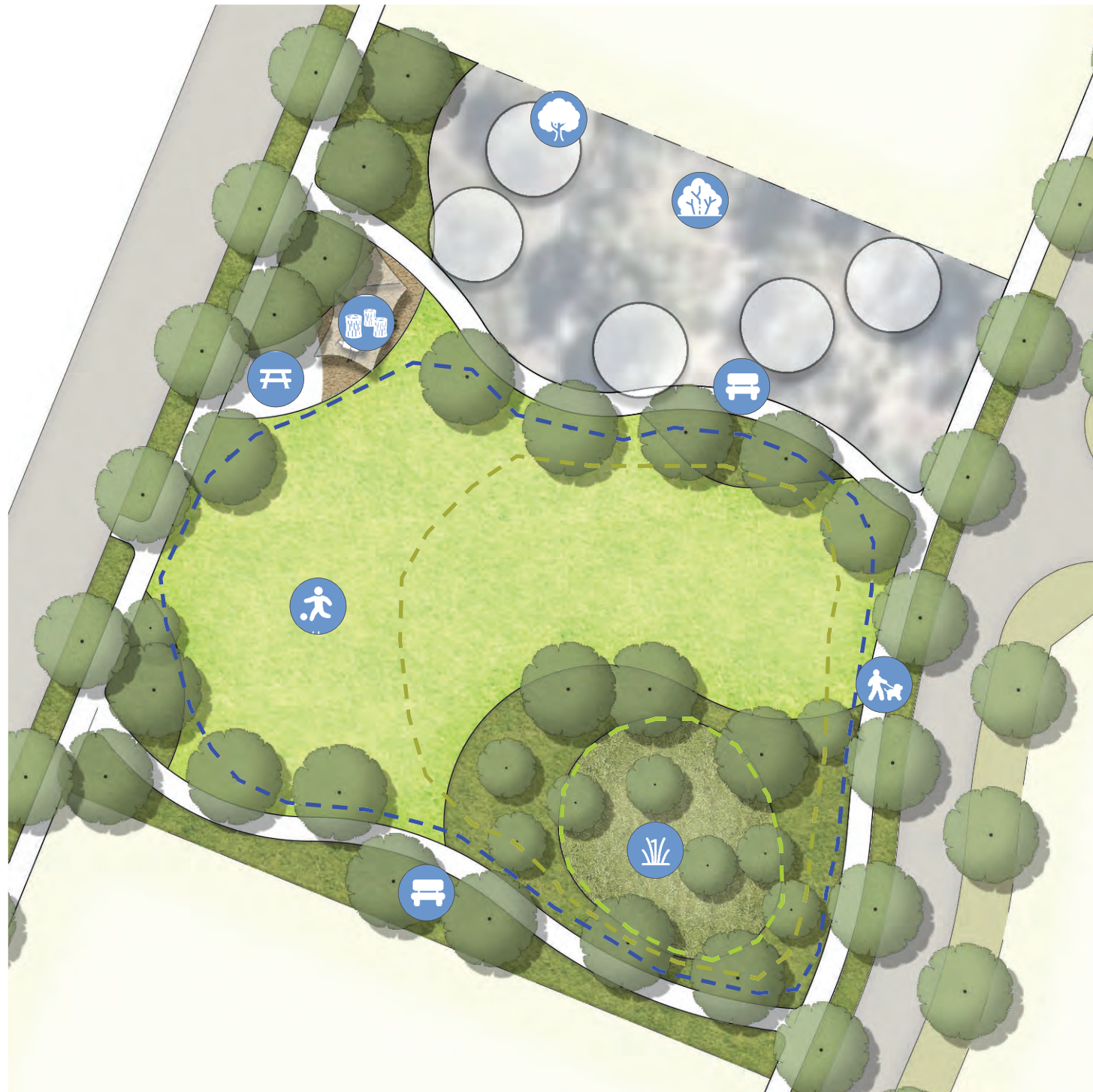


|                |                     |          |            |
|----------------|---------------------|----------|------------|
| Drawing Number | QPG003 : LSP : POS3 | Revision | C          |
| Date           | MAR 2024            | Scale    | 1:500 @ A3 |





# East Wanneroo Precinct 8 (Ranch Road) POS 4 (Pocket Park)



- Picnic Setting
- Bench Seating
- Nature Play
- Dog Walking
- Drainage Basin
- Passive Kickabout
- Retained Tree(s)
- Retained Vegetation

### OPEN SPACE TYPOLOGY

Pocket Park

**SIZE** (Excluding Road Reserve)  
4,591m<sup>2</sup>

### FUNCTIONS

Include by not limited to;

- Passive recreation function (places for relaxation & respite).
- Shade trees with small breakout areas of irrigated turf.
- Internal path network for bikes, scooters and connecting into the broader path network.
- Areas for short dog walking and respite points.
- Bench seating & Nature Play elements.
- Stormwater drainage function.
- Sense of Place, capturing historical and cultural character.
- Retention of existing trees and vegetation.
- Revegetation of native planting.
- Waterwise native planting with planting design to be hydrozoned according to irrigation requirements.

### DRAINAGE INFORMATION

**BASIN ID - B2**

#### FIRST 15mm BASIN

|                             |     |
|-----------------------------|-----|
| Side Slopes:                | 1:3 |
| Total Depth (m):            | 0.3 |
| Volume (m <sup>3</sup> ):   | 76  |
| Top Area (m <sup>2</sup> ): | 282 |

#### 20% AEP Basin

|                             |       |
|-----------------------------|-------|
| Side Slopes:                | 1:6   |
| Total Depth (m):            | 0.52  |
| Volume (m <sup>3</sup> ):   | 360   |
| Top Area (m <sup>2</sup> ): | 1,450 |

#### 1% AEP Basin

|                             |       |
|-----------------------------|-------|
| Side Slopes:                | 1:6   |
| Total Depth:                | 1.2   |
| Volume (m <sup>3</sup> ):   | 1,554 |
| Top Area (m <sup>2</sup> ): | 2,098 |



|                |                    |          |            |
|----------------|--------------------|----------|------------|
| Drawing Number | QPG003 : LSP :POS4 | Revision | C          |
| Date           | MAR 2024           | Scale    | 1:500 @ A3 |






05.

# East Wanneroo Precinct 8 (Ranch Road) POS 7 (Pocket Park)



-  Picnic Setting
-  Bench Seating
-  Nature Play
-  Dog Walking
-  Passive Kickabout

### OPEN SPACE TYPOLOGY

Pocket Park

**SIZE** (Excluding Road Reserve)  
4,591m<sup>2</sup>

### FUNCTIONS

Include by not limited to;

- Passive recreation function (places for relaxation & respite).
- Shade trees with small breakout areas of irrigated turf.
- Internal path network for bikes, scooters and connecting into the broader path network.
- Areas for short dog walking and respite points.
- Bench seating & Nature Play elements.
- Stormwater drainage function.
- Sense of Place, capturing historical and cultural character.
- Retention of existing trees and vegetation.
- Revegetation of native planting.
- Waterwise native planting with planting design to be hydrozoned according to irrigation requirements.

### DRAINAGE INFORMATION

**BASIN ID** - N/A



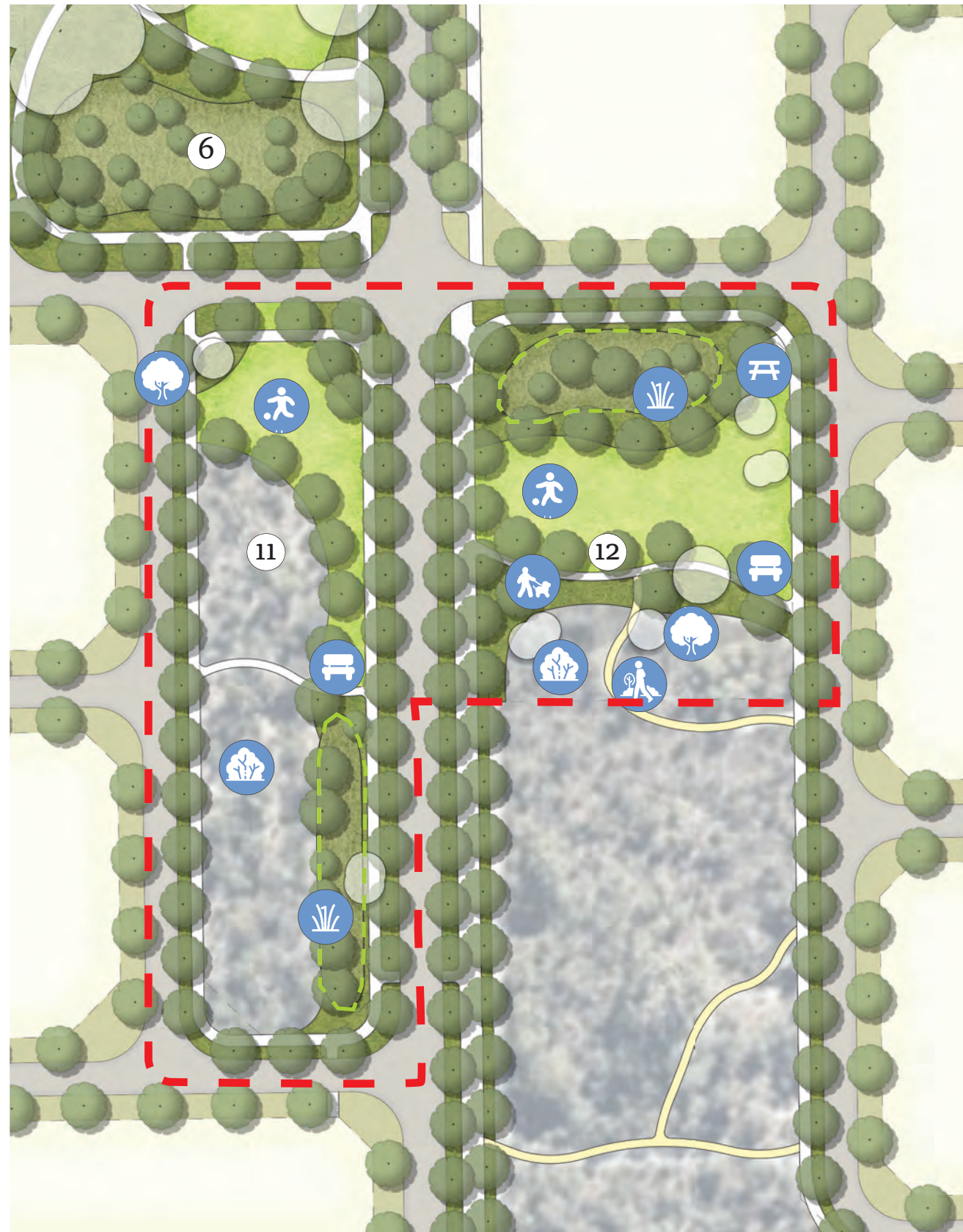
|                |                     |          |            |
|----------------|---------------------|----------|------------|
| Drawing Number | QPG003 : LSP : POS7 | Revision | C          |
| Date           | MAR 2024            | Scale    | 1:500 @ A3 |





# East Wanneroo Precinct 8 (Ranch Road) POS 11 & 12 (Pocket Park)

05.



- Picnic Setting
- Bench Seating
- Dog Walking
- Drainage Basin
- Passive Kickabout
- Vegetation Retention
- Retained Tree(s)
- Walking Trail

### OPEN SPACE TYPOLOGY

Pocket Park

### SIZE (Excluding Road Reserve)

3,646m<sup>2</sup> - POS 11

3,679m<sup>2</sup> - POS 12

### FUNCTIONS

Include by not limited to;

- Passive recreation function (places for relaxation & respite).
- Shade trees with small breakout areas of irrigated turf.
- Internal path network for bikes, scooters and connecting into the broader path network.
- Areas for short dog walking and respite points.
- Bench seating & Nature Play elements.
- Stormwater drainage function.
- Sense of Place, capturing historical and cultural character.
- Retention of existing trees and vegetation.
- Revegetation of native planting.
- Waterwise native planting with planting design to be hydrozoned according to irrigation requirements.
- Walk trails connection to adjacent Parkland.

### DRAINAGE INFORMATION - POS 11

BASIN ID - B10

#### FIRST 15mm BASIN

|                             |     |
|-----------------------------|-----|
| Side Slopes:                | 1:3 |
| Total Depth (m):            | 0.3 |
| Volume (m <sup>3</sup> ):   | 96  |
| Top Area (m <sup>2</sup> ): | 353 |

### DRAINAGE INFORMATION - POS 12

BASIN ID - B26

#### FIRST 15mm BASIN

|                             |     |
|-----------------------------|-----|
| Side Slopes:                | 1:3 |
| Total Depth (m):            | 0.3 |
| Volume (m <sup>3</sup> ):   | 138 |
| Top Area (m <sup>2</sup> ): | 497 |



|                |                         |          |             |
|----------------|-------------------------|----------|-------------|
| Drawing Number | QPG003 : LSP : POS11_12 | Revision | C           |
| Date           | MAR 2024                | Scale    | 1:1000 @ A3 |

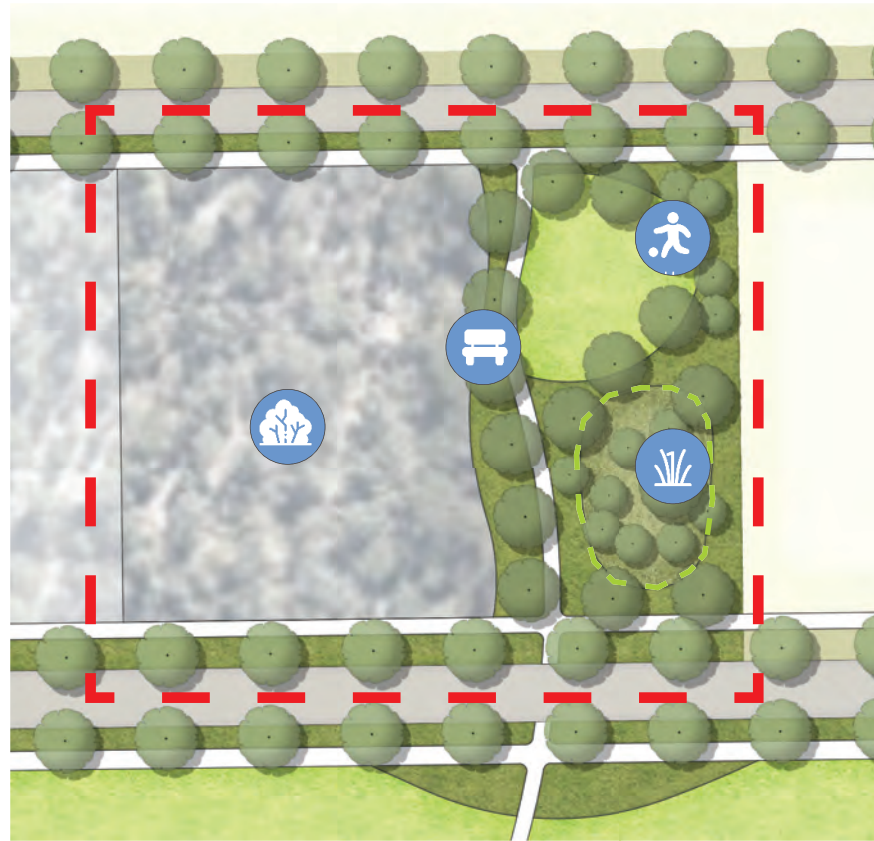


Considered Space



05.

# East Wanneroo Precinct 8 (Ranch Road) POS 14 & 16 (Pocket Park)



-  Picnic Setting
-  Bench Seating
-  Drainage Basin
-  Passive Kickabout
-  Vegetation Retention

### OPEN SPACE TYPOLOGY

Pocket Park

### SIZE (Excluding Road Reserve)

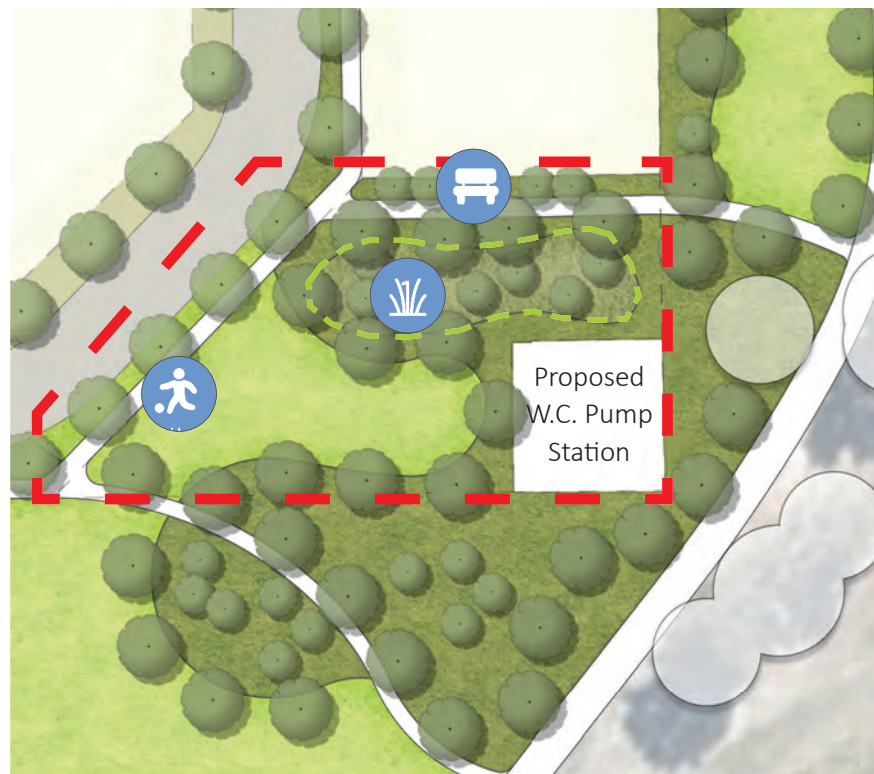
4,920m<sup>2</sup> - POS 14

2,116m<sup>2</sup> - POS 16

### FUNCTIONS

Include by not limited to;

- Passive recreation function (places for relaxation & respite).
- Shade trees with small breakout areas of irrigated turf.
- Internal path network for bikes, scooters and connecting into the broader path network.
- Areas for short dog walking and respite points.
- Bench seating & Nature Play elements.
- Stormwater drainage function.
- Sense of Place, capturing historical and cultural character.
- Retention of existing trees and vegetation.
- Revegetation of native planting.
- Waterwise native planting with planting design to be hydrozoned according to irrigation requirements.



### DRAINAGE INFORMATION - POS 14

BASIN ID - B11

#### FIRST 15mm BASIN

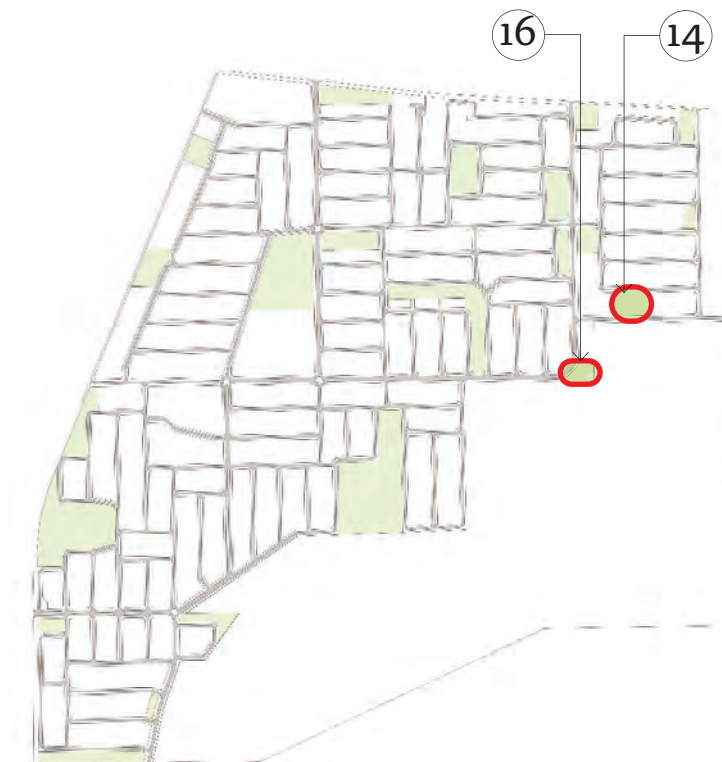
|                             |     |
|-----------------------------|-----|
| Side Slopes:                | 1:3 |
| Total Depth (m):            | 0.3 |
| Volume (m <sup>3</sup> ):   | 102 |
| Top Area (m <sup>2</sup> ): | 372 |

### DRAINAGE INFORMATION - POS 16

BASIN ID - B13

#### FIRST 15mm BASIN

|                             |     |
|-----------------------------|-----|
| Side Slopes:                | 1:3 |
| Total Depth (m):            | 0.3 |
| Volume (m <sup>3</sup> ):   | 131 |
| Top Area (m <sup>2</sup> ): | 475 |



|                |                         |          |             |
|----------------|-------------------------|----------|-------------|
| Drawing Number | QPG003 : LSP : POS14_16 | Revision | C           |
| Date           | MAR 2024                | Scale    | 1:1000 @ A3 |



Considered Space



05.

# East Wanneroo Precinct 8 (Ranch Road) POS 19, 20 & 21 (Pocket Park)



- Picnic Setting
- Bench Seating
- Dog Walking
- Drainage Basin
- Passive Kickabout
- Vegetation Retention
- Nature Play

### OPEN SPACE TYPOLOGY

Pocket Park

### SIZE (Excluding Road Reserve)

- 2,693m<sup>2</sup> - POS 19
- 2,693m<sup>2</sup> - POS 20
- 1,225m<sup>2</sup> - POS 21

### FUNCTIONS

Include by not limited to;

- Passive recreation function (places for relaxation & respite).
- Shade trees with small breakout areas of irrigated turf.
- Internal path network for bikes, scooters and connecting into the broader path network.
- Areas for short dog walking and respite points.
- Bench seating & Nature Play elements.
- Stormwater drainage function.
- Sense of Place, capturing historical and cultural character.
- Retention of existing trees and vegetation.
- Revegetation of native planting.
- Waterwise native planting with planting design to be hydrozoned according to irrigation requirements.



### DRAINAGE INFORMATION - POS 19 BASIN ID - B16

#### FIRST 15mm BASIN

|                  |     |
|------------------|-----|
| Side Slopes:     | 1:3 |
| Total Depth (m): | 0.3 |
| Volume (m3):     | 76  |
| Top Area (m2):   | 282 |

#### 20% AEP Basin

|                  |      |
|------------------|------|
| Side Slopes:     | 1:6  |
| Total Depth (m): | 0.48 |
| Volume (m3):     | 328  |
| Top Area (m2):   | 1540 |

#### 1% AEP Basin

|                |      |
|----------------|------|
| Side Slopes:   | 1:6  |
| Total Depth:   | 1.2  |
| Volume (m3):   | 1703 |
| Top Area (m2): | 2285 |

### DRAINAGE INFORMATION - POS 20 BASIN ID - B20

#### FIRST 15mm BASIN

|                  |      |
|------------------|------|
| Side Slopes:     | 1:3  |
| Total Depth (m): | 0.3  |
| Volume (m3):     | 459  |
| Top Area (m2):   | 1607 |

### DRAINAGE INFORMATION - POS 21 BASIN ID - B18

#### FIRST 15mm BASIN

|                  |     |
|------------------|-----|
| Side Slopes:     | 1:3 |
| Total Depth (m): | 0.3 |
| Volume (m3):     | 119 |
| Top Area (m2):   | 433 |



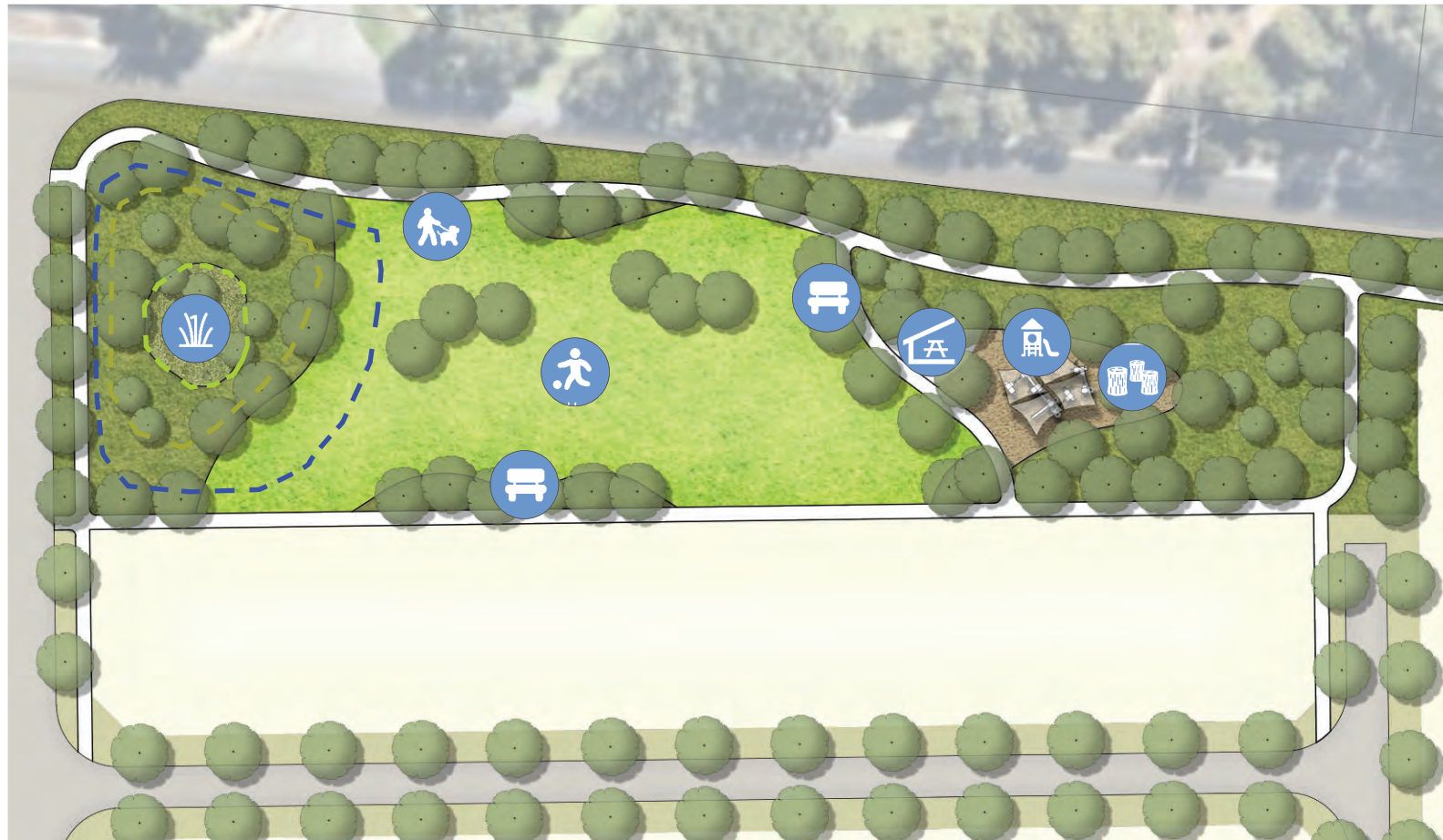
|                |                            |          |             |
|----------------|----------------------------|----------|-------------|
| Drawing Number | QPG003 : LSP : POS19_20_21 | Revision | C           |
| Date           | MAR 2024                   | Scale    | 1:1000 @ A3 |





05.

# East Wanneroo Precinct 8 (Ranch Road) POS 1 (Local Park)



- Shelter & Picnic Setting
- Bench Seating
- Play Space (minor)
- Nature Play
- Dog Walking
- Drainage Basin
- Passive Kickabout

### OPEN SPACE TYPOLOGY

Local Park

**SIZE** (Excluding Road Reserve)  
8,910m<sup>2</sup>

### FUNCTIONS

Include by not limited to;

- Small scale recreation function with active & passive experiences.
- Shade trees with areas of irrigated turf.
- Areas for short dog walking and respite points.
- Internal path network connecting into the broader path network.
- Bench seating & shaded play space.
- Picnic setting & shelter.
- Stormwater drainage function.
- Sense of Place, capturing historical and cultural character.
- Retention of existing trees & vegetation.
- Revegetation of native planting.
- Waterwise native planting with planting design to be hydrozoned according to irrigation requirements.
- Maintenance & emergency vehicle access

### DRAINAGE INFORMATION - POS 1 BASIN ID - B1

#### FIRST 15mm BASIN

Side Slopes: 1:3  
Total Depth (m): 0.3  
Volume (m<sup>3</sup>): 50  
Top Area (m<sup>2</sup>): 190

#### 20% AEP Basin

Side Slopes: 1:6  
Total Depth (m): 0.5  
Volume (m<sup>3</sup>): 190  
Top Area (m<sup>2</sup>): 830

#### 1% AEP Basin

Side Slopes: 1:6  
Total Depth: 1.2  
Volume (m<sup>3</sup>): 946  
Top Area (m<sup>2</sup>): 1354



|                |                    |          |             |
|----------------|--------------------|----------|-------------|
| Drawing Number | QPG003 : LSP :POS1 | Revision | C           |
| Date           | MAR 2024           | Scale    | 1:1000 @ A3 |

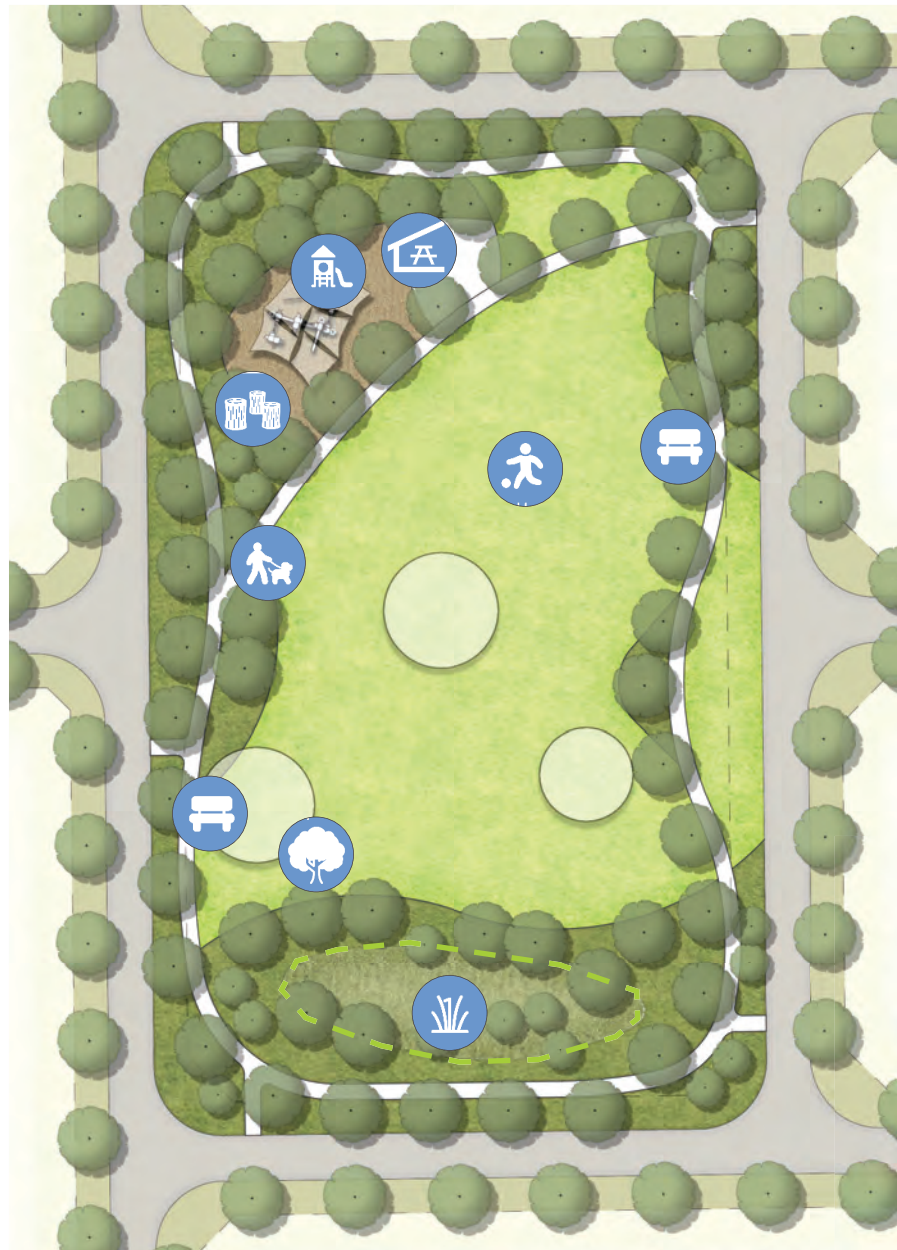


Considered Space



# East Wanneroo Precinct 8 (Ranch Road) POS 5 & 8 (Local Park)

05.



### DRAINAGE INFORMATION - POS 5 BASIN ID - B5

#### FIRST 15mm BASIN

|                  |     |
|------------------|-----|
| Side Slopes:     | 1:3 |
| Total Depth (m): | 0.3 |
| Volume (m3):     | 86  |
| Top Area (m2):   | 317 |

- Shelter & Picnic Setting
- Bench Seating
- Play Space (minor)
- Nature Play
- Dog Walking
- Drainage Basin
- Passive Kickabout
- Retained Tree(s)

### OPEN SPACE TYPOLOGY

Local Park

### SIZE (Excluding Road Reserve)

8,927m<sup>2</sup> - POS 5  
6,786m<sup>2</sup> - POS 8

### FUNCTIONS

Include by not limited to;

- Small scale recreation function with active & passive experiences.
- Shade trees with areas of irrigated turf.
- Areas for short dog walking and respite points.
- Internal path network connecting into the broader path network.
- Bench seating & shaded play space.
- Picnic setting & shelter.
- Stormwater drainage function.
- Sense of Place, capturing historical and cultural character.
- Retention of existing trees & vegetation.
- Revegetation of native planting.
- Waterwise native planting with planting design to be hydrozoned according to irrigation requirements.
- Maintenance & emergency vehicle access



### DRAINAGE INFORMATION - POS 8 BASIN ID - B29

#### FIRST 15mm BASIN

|                  |     |
|------------------|-----|
| Side Slopes:     | 1:3 |
| Total Depth (m): | 0.3 |
| Volume (m3):     | 234 |
| Top Area (m2):   | 829 |

#### 20% AEP Basin

|                  |      |
|------------------|------|
| Side Slopes:     | 1:6  |
| Total Depth (m): | 0.39 |
| Volume (m3):     | 141  |
| Top Area (m2):   | 3390 |

#### 1% AEP Basin

|                |      |
|----------------|------|
| Side Slopes:   | 1:6  |
| Total Depth:   | 1.2  |
| Volume (m3):   | 3747 |
| Top Area (m2): | 4597 |



|                |                       |          |             |
|----------------|-----------------------|----------|-------------|
| Drawing Number | QPG003 : LSP : POS5_8 | Revision | C           |
| Date           | MAR 2024              | Scale    | 1:1000 @ A3 |





05.

# East Wanneroo Precinct 8 (Ranch Road) POS 6 (Local Park)



- Shelter & Picnic Setting
- Bench Seating
- Play Space (minor)
- Nature Play
- Dog Walking
- Drainage Basin
- Passive Kickabout
- Retained Tree(s)
- Parkland Link

### OPEN SPACE TYPOLOGY

Local Park

### SIZE (Excluding Road Reserve)

7,538m<sup>2</sup>

### FUNCTIONS

Include by not limited to;

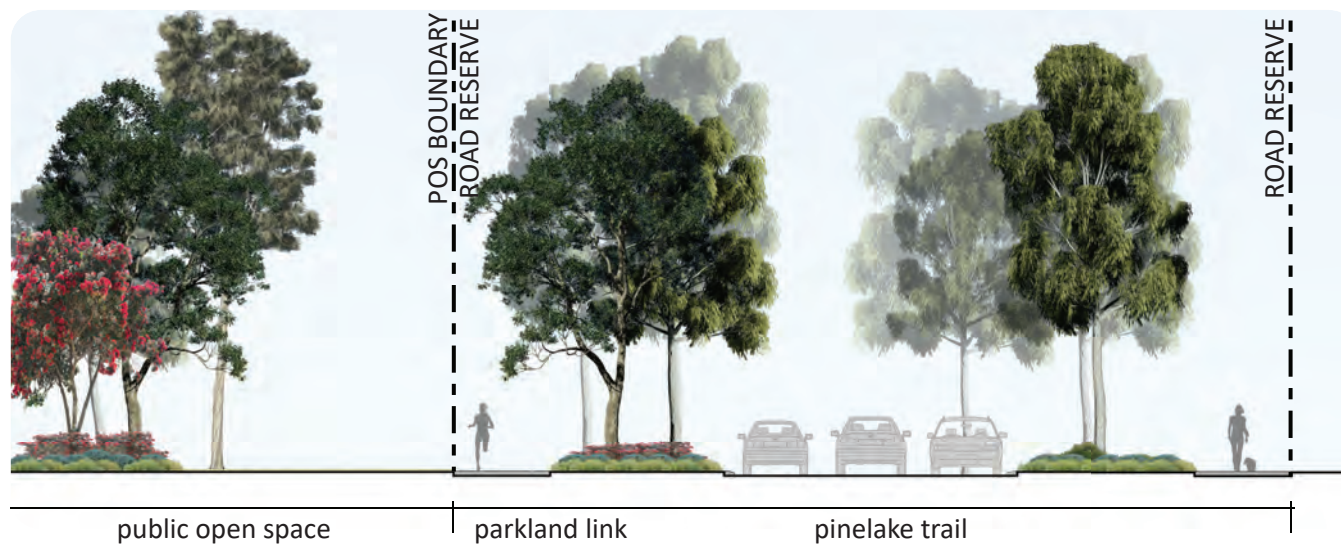
- Small scale recreation function with active & passive experiences.
- Shade trees with areas of irrigated turf.
- Areas for short dog walking and respite points.
- Internal path network connecting into the broader path network.
- Bench seating & shaded play space.
- Picnic setting & shelter.
- Stormwater drainage function.
- Sense of Place, capturing historical and cultural character.
- Retention of existing trees & vegetation.
- Revegetation of native planting.
- Waterwise native planting with planting design to be hydrozoned according to irrigation requirements.
- Maintenance & emergency vehicle access

### DRAINAGE INFORMATION - POS 6

BASIN ID - B6

#### FIRST 15mm BASIN

|                             |     |
|-----------------------------|-----|
| Side Slopes:                | 1:3 |
| Total Depth (m):            | 0.3 |
| Volume (m <sup>3</sup> ):   | 268 |
| Top Area (m <sup>2</sup> ): | 949 |



|                |                    |          |             |
|----------------|--------------------|----------|-------------|
| Drawing Number | QPG003 : LSP :POS6 | Revision | C           |
| Date           | MAR 2024           | Scale    | 1:1000 @ A3 |

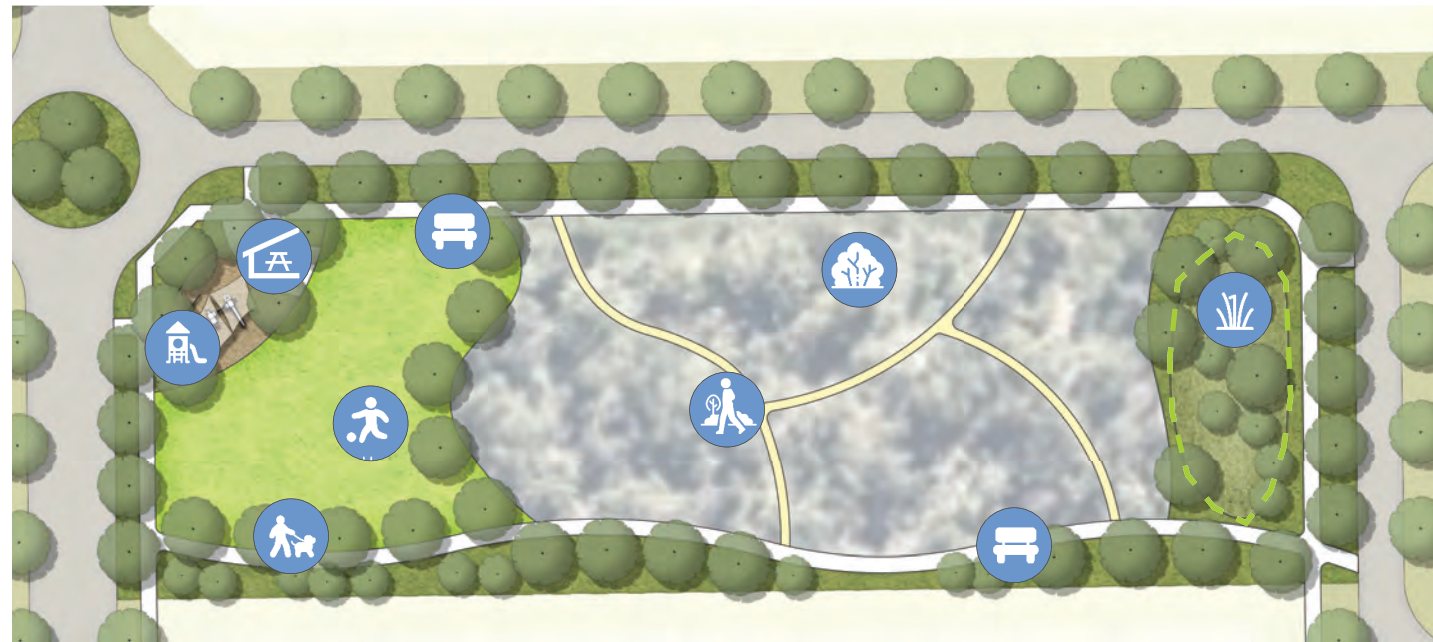




# East Wanneroo Precinct 8 (Ranch Road)

## POS 10 & 22 (Local Park)

05.



**DRAINAGE INFORMATION - POS 10**  
**BASIN ID - B7**

**FIRST 15mm BASIN** - - - -

|                  |     |
|------------------|-----|
| Side Slopes:     | 1:3 |
| Total Depth (m): | 0.3 |
| Volume (m3):     | 131 |
| Top Area (m2):   | 475 |

-  Shelter & Picnic Setting
-  Bench Seating
-  Play Space (minor)
-  Dog Walking
-  Drainage Basin
-  Passive Kickabout
-  Retained Tree(s)
-  Vegetation Retention
-  Walking Trail

**OPEN SPACE TYPOLOGY**  
 Local Park

**SIZE** (Excluding Road Reserve)  
 7,559m2 - POS 10  
 8,902m2 - POS 22

**FUNCTIONS**

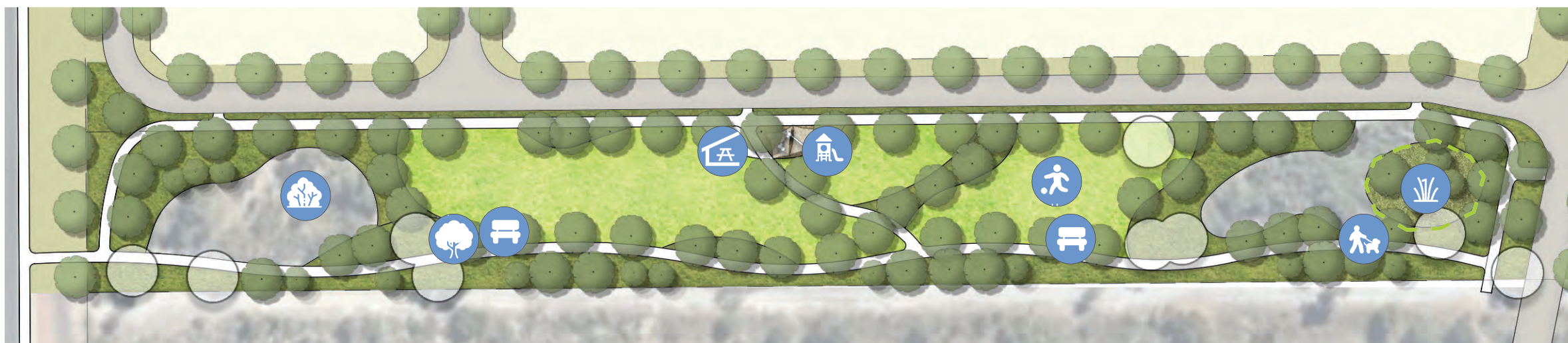
Include by not limited to;

- Small scale recreation function with active & passive experiences.
- Shade trees with areas of irrigated turf.
- Areas for short dog walking and respite points.
- Internal path network connecting into the broader path network.
- Bench seating & shaded play space.
- Picnic setting & shelter.
- Stormwater drainage function.
- Sense of Place, capturing historical and cultural character.
- Retention of existing trees & vegetation.
- Revegetation of native planting.
- Waterwise native planting with planting design to be hydrozoned according to irrigation requirements.
- Maintenance & emergency vehicle access.
- Walk trails connection to adjacent path network.

**DRAINAGE INFORMATION - POS 22**  
**BASIN ID - B19**

**FIRST 15mm BASIN** - - - -

|                  |     |
|------------------|-----|
| Side Slopes:     | 1:3 |
| Total Depth (m): | 0.3 |
| Volume (m3):     | 76  |
| Top Area (m2):   | 282 |



|                |                         |          |             |
|----------------|-------------------------|----------|-------------|
| Drawing Number | QPG003 : LSP : POS10_22 | Revision | C           |
| Date           | MAR 2024                | Scale    | 1:1000 @ A3 |





05.

# East Wanneroo Precinct 8 (Ranch Road) POS 15 (Local Park)



- Shelter & Picnic Setting
- Bench Seating
- Play Space (minor)
- Dog Walking
- Drainage Basin
- Passive Kickabout
- Retained Tree(s)
- Vegetation Retention
- Walking Trail

### OPEN SPACE TYPOLOGY

Local Park

### SIZE (Excluding Road Reserve)

5,958m<sup>2</sup>

### FUNCTIONS

Include by not limited to;

- Small scale recreation function with active & passive experiences.
- Shade trees with areas of irrigated turf.
- Areas for short dog walking and respite points.
- Internal path network connecting into the broader path network.
- Bench seating & shaded play space.
- Picnic setting & shelter.
- Stormwater drainage function.
- Sense of Place, capturing historical and cultural character.
- Retention of existing trees & vegetation.
- Revegetation of native planting.
- Waterwise native planting with planting design to be hydrozoned according to irrigation requirements.
- Maintenance & emergency vehicle access

### DRAINAGE INFORMATION - POS 15

**BASIN ID - B24**

#### FIRST 15mm BASIN

|                             |     |
|-----------------------------|-----|
| Side Slopes:                | 1:3 |
| Total Depth (m):            | 0.3 |
| Volume (m <sup>3</sup> ):   | 201 |
| Top Area (m <sup>2</sup> ): | 718 |

#### 20% AEP Basin

|                             |      |
|-----------------------------|------|
| Side Slopes:                | 1:6  |
| Total Depth (m):            | 0.47 |
| Volume (m <sup>3</sup> ):   | 1114 |
| Top Area (m <sup>2</sup> ): | 5920 |

#### 1% AEP Basin

|                             |      |
|-----------------------------|------|
| Side Slopes:                | 1:6  |
| Total Depth:                | 1.2  |
| Volume (m <sup>3</sup> ):   | 6028 |
| Top Area (m <sup>2</sup> ): | 7362 |



|                |                     |          |             |
|----------------|---------------------|----------|-------------|
| Drawing Number | QPG003 : LSP :POS15 | Revision | C           |
| Date           | MAR 2024            | Scale    | 1:1000 @ A3 |



Considered Space



# East Wanneroo Precinct 8 (Ranch Road) POS 9 (Neighbourhood Park)



- Shelter & Picnic Settings
- Bench Seating
- Play Space (major)
- Retained Tree(s)
- Drainage Basin
- Multipurpose Sports Oval
- BBQ
- Fitness Node
- Drinking Fountain

**OPEN SPACE TYPOLOGY**

Neighbourhood Park

**SIZE** (Excluding Road Reserve)

28,020m<sup>2</sup>

**FUNCTIONS**

Include by not limited to;

- Medium scale recreation function with active & passive experiences.
- Potential to incorporate accessible remnant bushland and conservation areas.
- Potential to provide recreational, sports and nature area functions.
- Shade trees with areas of irrigated turf.
- Internal path network connecting into the external pedestrian and cycle path network.
- Multiple seating, picnic settings and shelter opportunities.
- Furniture to include bins, drink fountains, BBQ facilities & lighting.
- Medium to large shaded play space with universal access equipment.
- Stormwater drainage function.
- Sense of Place, capturing historical and cultural character.
- Retention of existing trees & vegetation.
- Revegetation of native planting.
- Waterwise native planting with planting design to be hydrozoned according to irrigation requirements.
- Maintenance & emergency vehicle access.
- Fitness Node.

**DRAINAGE INFORMATION - POS 9**

**BASIN ID - B8**

**FIRST 15mm BASIN**

|                             |     |
|-----------------------------|-----|
| Side Slopes:                | 1:3 |
| Total Depth (m):            | 0.3 |
| Volume (m <sup>3</sup> ):   | 107 |
| Top Area (m <sup>2</sup> ): | 392 |



|                |                    |          |             |
|----------------|--------------------|----------|-------------|
| Drawing Number | QPG003 : LSP :POS9 | Revision | C           |
| Date           | MAR 2024           | Scale    | 1:1000 @ A3 |





# East Wanneroo Precinct 8 (Ranch Road) POS 13 (Neighbourhood Park)

05.



-  Shelter & Picnic Setting
-  Bench Seating
-  Play Space (major)
-  Dog Walking
-  Drainage Basin
-  Passive Kickabout
-  Retained Tree(s)
-  Vegetation Retention
-  Educational Signage
-  BBQ
-  Drinking Fountain

**OPEN SPACE TYPOLOGY**  
Neighbourhood Park

**SIZE** (Excluding Road Reserve)  
16,703m<sup>2</sup>

- FUNCTIONS**  
Include by not limited to;
- Medium scale recreation function with active & passive experiences.
  - Potential to incorporate accessible remnant bushland and conservation areas.
  - Potential to provide recreational, sports and nature area functions.
  - Shade trees with areas of irrigated turf.
  - Internal path network connecting into the external pedestrian and cycle path network.
  - Multiple seating, picnic settings and shelter opportunities.
  - Furniture to include bins, drink fountains, BBQ facilities & lighting.
  - Medium to large shaded play space with universal access equipment.
  - Stormwater drainage function.
  - Sense of Place, capturing historical and cultural character.
  - Retention of existing trees & vegetation.
  - Revegetation of native planting.
  - Waterwise native planting with planting design to be hydrozoned according to irrigation requirements.
  - Maintenance & emergency vehicle access.
  - Walk trails connection to adjacent path network.

**DRAINAGE INFORMATION - POS 13**  
**BASIN ID - B25**

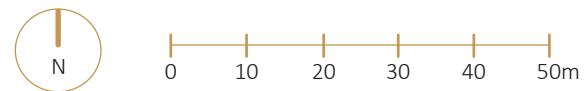
**FIRST 15mm BASIN** - - - -  
Side Slopes: 1:3  
Total Depth (m): 0.3  
Volume (m<sup>3</sup>): 102  
Top Area (m<sup>2</sup>): 372

**BASIN ID - B12**

**FIRST 15mm BASIN** - - - -  
Side Slopes: 1:3  
Total Depth (m): 0.3  
Volume (m<sup>3</sup>): 102  
Top Area (m<sup>2</sup>): 372



|                |                      |          |             |
|----------------|----------------------|----------|-------------|
| Drawing Number | QPG003 : LSP : POS13 | Revision | C           |
| Date           | MAR 2024             | Scale    | 1:1000 @ A3 |



Considered Space





- Shelter & Picnic Setting
- Bench Seating
- Play Space (major)
- Dog Walking
- Drainage Basin
- Passive Kickabout
- Vegetation Retention
- BBQ
- Drinking Fountain

**OPEN SPACE TYPOLOGY**

Neighbourhood Park

**SIZE** (Excluding Road Reserve)  
40,562m<sup>2</sup>

**FUNCTIONS**

Include by not limited to;

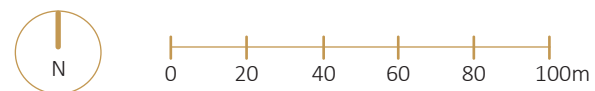
- Medium scale recreation function with active & passive experiences.
- Potential to incorporate accessible remnant bushland and conservation areas.
- Potential to provide recreational, sports and nature area functions.
- Shade trees with areas of irrigated turf.
- Internal path network connecting into the external pedestrian and cycle path network.
- Multiple seating, picnic settings and shelter opportunities.
- Furniture to include bins, drink fountains, BBQ facilities & lighting.
- Medium to large shaded play space with universal access equipment.
- Stormwater drainage function.
- Sense of Place, capturing historical and cultural character.
- Retention of existing trees & vegetation.
- Revegetation of native planting.
- Waterwise native planting with planting design to be hydrozoned according to irrigation requirements.
- Maintenance & emergency vehicle access.

**DRAINAGE INFORMATION - POS 17**

|                             |     |
|-----------------------------|-----|
| <b>BASIN ID - B21</b>       |     |
| <b>FIRST 15mm BASIN</b>     |     |
| Side Slopes:                | 1:3 |
| Total Depth (m):            | 0.3 |
| Volume (m <sup>3</sup> ):   | 268 |
| Top Area (m <sup>2</sup> ): | 949 |
| <b>BASIN ID - B22</b>       |     |
| <b>FIRST 15mm BASIN</b>     |     |
| Side Slopes:                | 1:3 |
| Total Depth (m):            | 0.3 |
| Volume (m <sup>3</sup> ):   | 155 |
| Top Area (m <sup>2</sup> ): | 562 |
| <b>BASIN ID - B27</b>       |     |
| <b>FIRST 15mm BASIN</b>     |     |
| Side Slopes:                | 1:3 |
| Total Depth (m):            | 0.3 |
| Volume (m <sup>3</sup> ):   | 34  |
| Top Area (m <sup>2</sup> ): | 134 |



|                |                     |          |             |
|----------------|---------------------|----------|-------------|
| Drawing Number | QPG003 : LSP :POS17 | Revision | C           |
| Date           | MAR 2024            | Scale    | 1:2000 @ A3 |





# East Wanneroo Precinct 8 (Ranch Road) POS 18 (Neighbourhood Park)



- Shelter & Picnic Setting
- Bench Seating
- BBQ
- Dog Walking
- Drinking Fountain
- Drainage Basin
- Vegetation Retention
- Passive Kickabout
- Walking Trail
- Retained Tree(s)
- Educational Signage

**OPEN SPACE TYPOLOGY**

Neighbourhood Park

**SIZE** (Excluding Road Reserve)

40,562m<sup>2</sup>

**FUNCTIONS**

Include by not limited to;

- Medium scale recreation function with active & passive experiences.
- Potential to incorporate accessible remnant bushland and conservation areas.
- Potential to provide recreational, sports and nature area functions.
- Shade trees with areas of irrigated turf.
- Internal path network connecting into the external pedestrian and cycle path network.
- Multiple seating, picnic settings and shelter opportunities.
- Furniture to include bins, drink fountains, BBQ facilities & lighting.
- Stormwater drainage function.
- Sense of Place, capturing historical and cultural character.
- Retention of existing trees & vegetation.
- Revegetation of native planting.
- Waterwise native planting with planting design to be hydrozoned according to irrigation requirements.
- Maintenance & emergency vehicle access.
- Walk trails connection to adjacent path network.

**DRAINAGE INFORMATION - POS 18**

**BASIN ID - B14**

|                     |      |
|---------------------|------|
| <b>1% AEP Basin</b> | ---  |
| Side Slopes:        | -    |
| Total Depth:        | 0.39 |
| Volume (m3):        | 2565 |
| Top Area (m2):      | 7000 |

**BASIN ID - B17**

|                         |     |
|-------------------------|-----|
| <b>FIRST 15mm BASIN</b> | --- |
| Side Slopes:            | 1:3 |
| Total Depth (m):        | 0.3 |
| Volume (m3):            | 76  |
| Top Area (m2):          | 282 |

**BASIN ID - B15**

|                         |     |
|-------------------------|-----|
| <b>FIRST 15mm BASIN</b> | --- |
| Side Slopes:            | 1:3 |
| Total Depth (m):        | 0.3 |
| Volume (m3):            | 67  |
| Top Area (m2):          | 250 |

**20% AEP Basin**

|                      |      |
|----------------------|------|
| <b>20% AEP Basin</b> | ---  |
| Side Slopes:         | 1:6  |
| Total Depth (m):     | 0.6  |
| Volume (m3):         | 380  |
| Top Area (m2):       | 1129 |

**20% AEP Basin**

|                      |     |
|----------------------|-----|
| <b>20% AEP Basin</b> | --- |
| Side Slopes:         | 1:6 |
| Total Depth (m):     | 0.6 |
| Volume (m3):         | 334 |
| Top Area (m2):       | 999 |



|                |                      |          |             |
|----------------|----------------------|----------|-------------|
| Drawing Number | QPG003 : LSP : POS18 | Revision | C           |
| Date           | MAR 2024             | Scale    | 1:2000 @ A3 |










# East Wanneroo Precinct 8 (Ranch Road) Park A, B & C (Parkland)

05.



-  Bench Seating
-  Dog Walking
-  Vegetation Retention
-  Walking Trail
-  Educational Signage

### OPEN SPACE TYPOLOGY

Parkland

### SIZE (Excluding Road Reserve)

30,100m<sup>2</sup> - PARK A

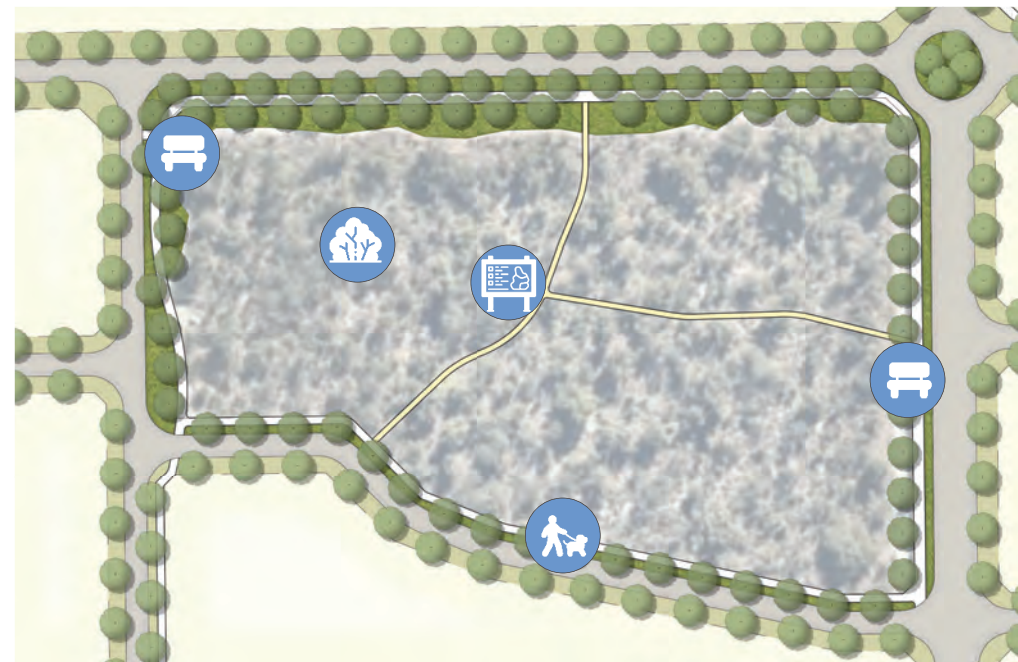
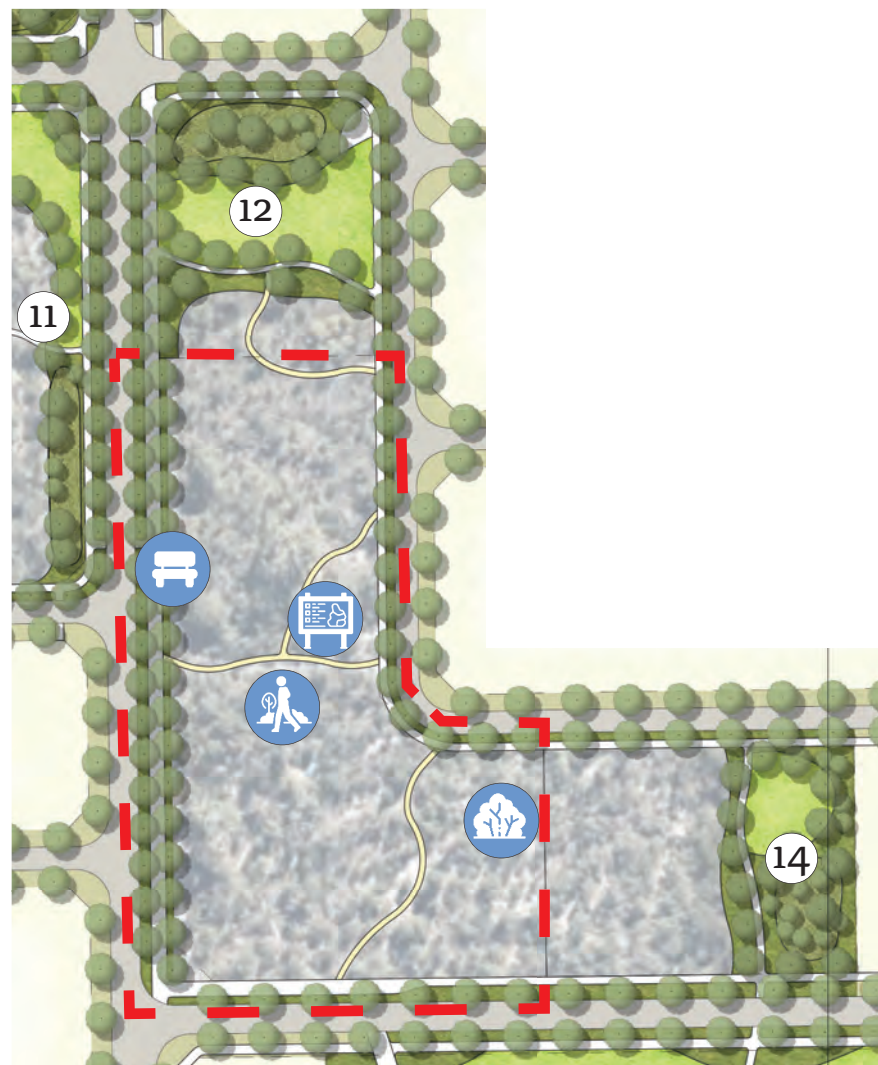
21,300m<sup>2</sup> - PARK B

11,700m<sup>2</sup> - PARK C

### FUNCTIONS

Include by not limited to;

- Accessible areas of remnant bushland and conservation areas.
- Internal circulation paths & walk trails linking with external pedestrian and cycle paths.
- Sense of Place, capturing historical and cultural character including ecological and cultural links.
- Educational signage.
- Retention of existing trees & vegetation.
- Opportunity to restore and enhance biodiversity via weed removal and revegetation
- Access for maintenance, service and emergency vehicles.
- Opportunity for complementary landscaping including areas of native revegetation, water wise garden bed and tree planting.
- Informal seating & picnic settings opportunities.
- Walk trails connection to adjacent path network.



|                |                          |          |             |
|----------------|--------------------------|----------|-------------|
| Drawing Number | QPG003 : LSP :PARK A,B,C | Revision | C           |
| Date           | MAR 2024                 | Scale    | 1:2000 @ A3 |





# East Wanneroo Precinct 8 (Ranch Road)

## Lake Mariginiup & Little Lake Mariginiup (Parkland)

05.

-  Shelter & Picnic Setting
-  Walking Trail
-  Bench Seating
-  Educational Signage
-  Dog Walking
-  Parkland Link
-  Passive Kickabout
-  BBQ
-  Retained Tree(s)
-  Fitness Node
-  Vegetation Retention
-  Drinking Fountain
-  Revegetation
-  Dog Park
-  Play Space (minor)



**OPEN SPACE TYPOLOGY**

Parkland

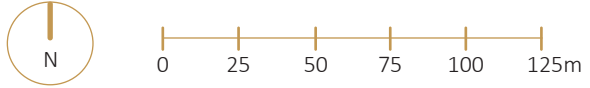
**SIZE** (Including Mariginiup Lake and Little Mariginiup Lake)  
87.5731 ha

**FUNCTIONS**

- Include by not limited to;
- Accessible areas of remnant bushland and conservation areas.
  - Internal circulation paths, boardwalks & walk trails linking with external pedestrian and cycle paths.
  - Parkland Link provides an interconnected pedestrian and cycle path network between Lake Mariginiup, Little Lake Mariginiup and Adams Lake to the north.
  - Sense of Place, capturing historical and cultural character including ecological and cultural links.
  - Educational signage.
  - Retention of existing trees & vegetation.
  - Opportunity to restore and enhance biodiversity via weed removal and revegetation
  - Access for maintenance, service and emergency vehicles.
  - Opportunity for complementary landscaping including areas of native revegetation, water wise garden bed and tree planting.
  - Informal seating & picnic settings opportunities.
  - Walk trails connection to adjacent path network.
  - Fitness Nodes.



|                |                   |          |             |
|----------------|-------------------|----------|-------------|
| Drawing Number | QPG003 : LSP :MAR | Revision | C           |
| Date           | MAR 2024          | Scale    | 1:2500 @ A3 |





# 06. Streetscapes

## Streetscapes

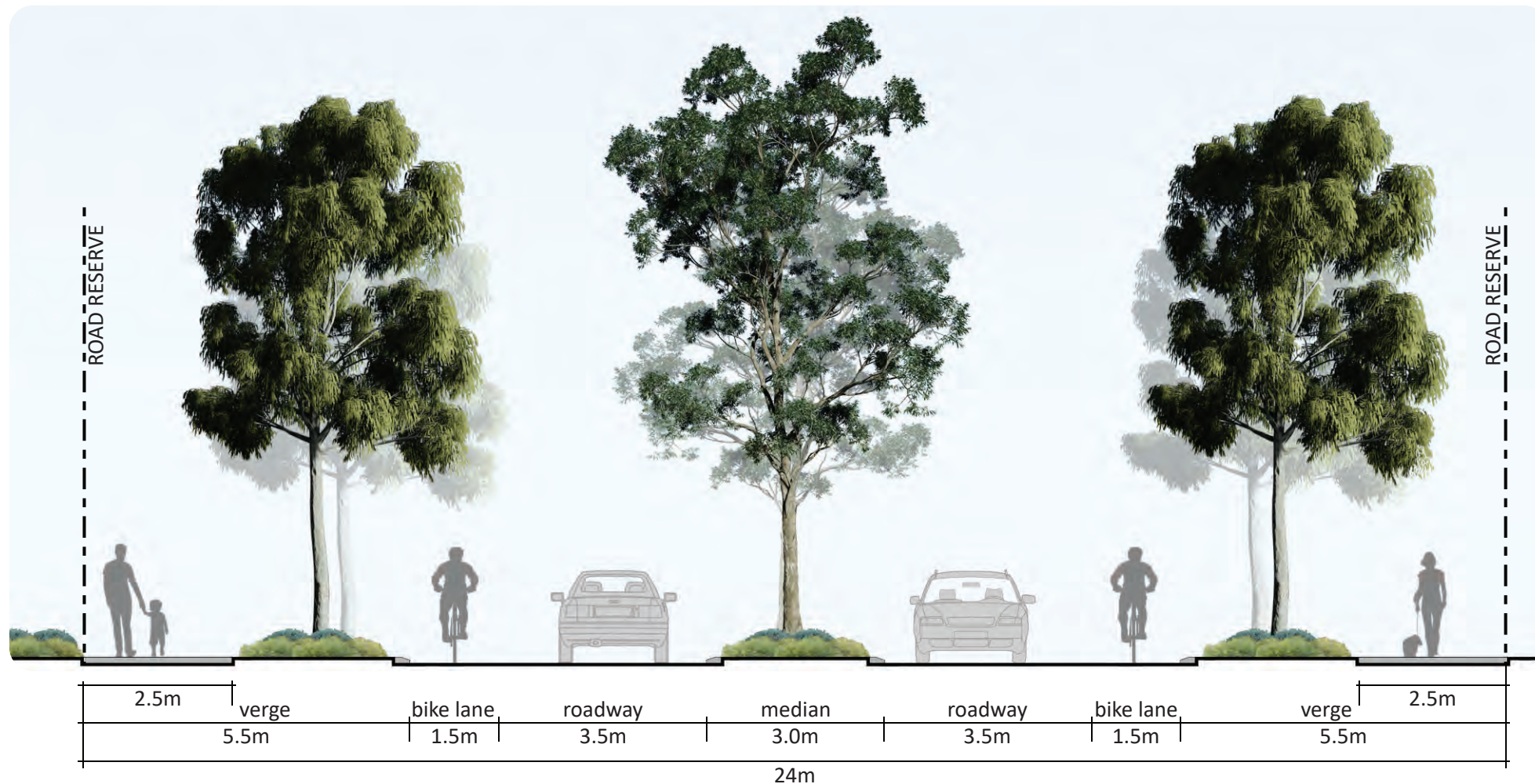
The street will become the principal means of integration for activities within the Ranch Road precinct, with street design of primary importance for place making and the activation of land use across the precinct and greater East Wanneroo. It will be responsive to existing vegetation, topography, function and cater appropriately for pedestrians and cyclist and in doing so, providing an equitable balance between pedestrians, private vehicles, and public transport in a safe and efficient manner.

Internal streets throughout the precinct will have a suburban neighbourhood character with appealing, highly integrated pedestrian pavements, seating, lighting, interpretive & educational information and where possible an established, continuous tree canopy.

Streetscapes throughout the development shall incorporate a variety of treatments in response to the road hierarchy system. In all cases, landscape works shall incorporate tree planting in accordance with the accepted traffic standards and the City of Wanneroo’s East Wanneroo Street Tree Guidelines. Treatments may include soft works such as street trees, smaller shrubs and groundcovers. It is envisaged that the stormwater runoff from residential roads will be contained within a system of bio-retention basins distributed along road reserves and the public open space network.

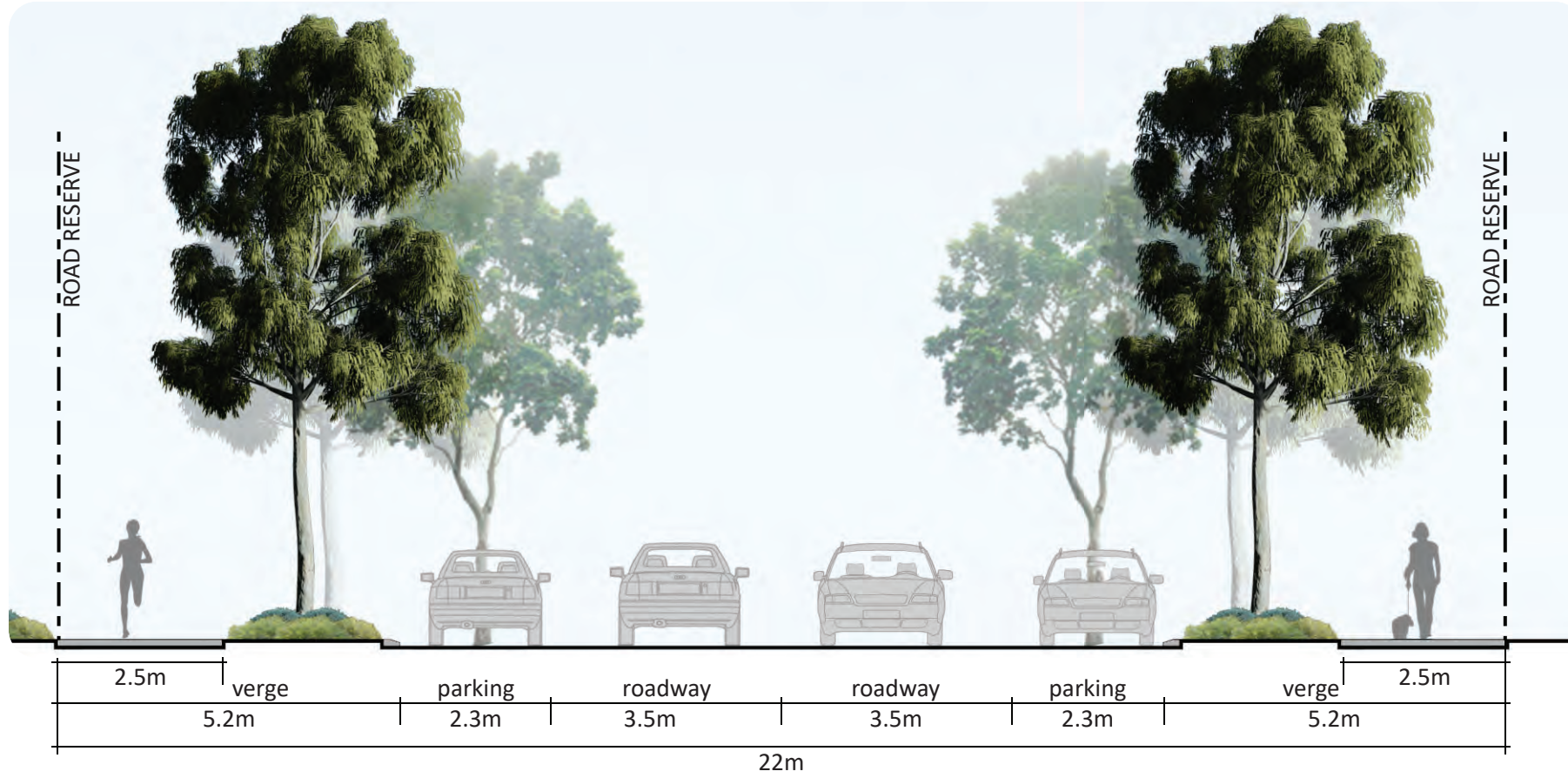
Tree, shrub and groundcover species used throughout the streetscapes will predominantly be native species. It is proposed that species selection for streetscapes will also include species which reference the historic and cultural influences in the area and as outlined in the East Wanneroo District Structure Plan Street Tree Schedule. Deciduous exotic species historically used around homesteads may be used throughout the precinct.

The below cross-sections are indicative only and will be subject to further detailed design at the subdivision stage.

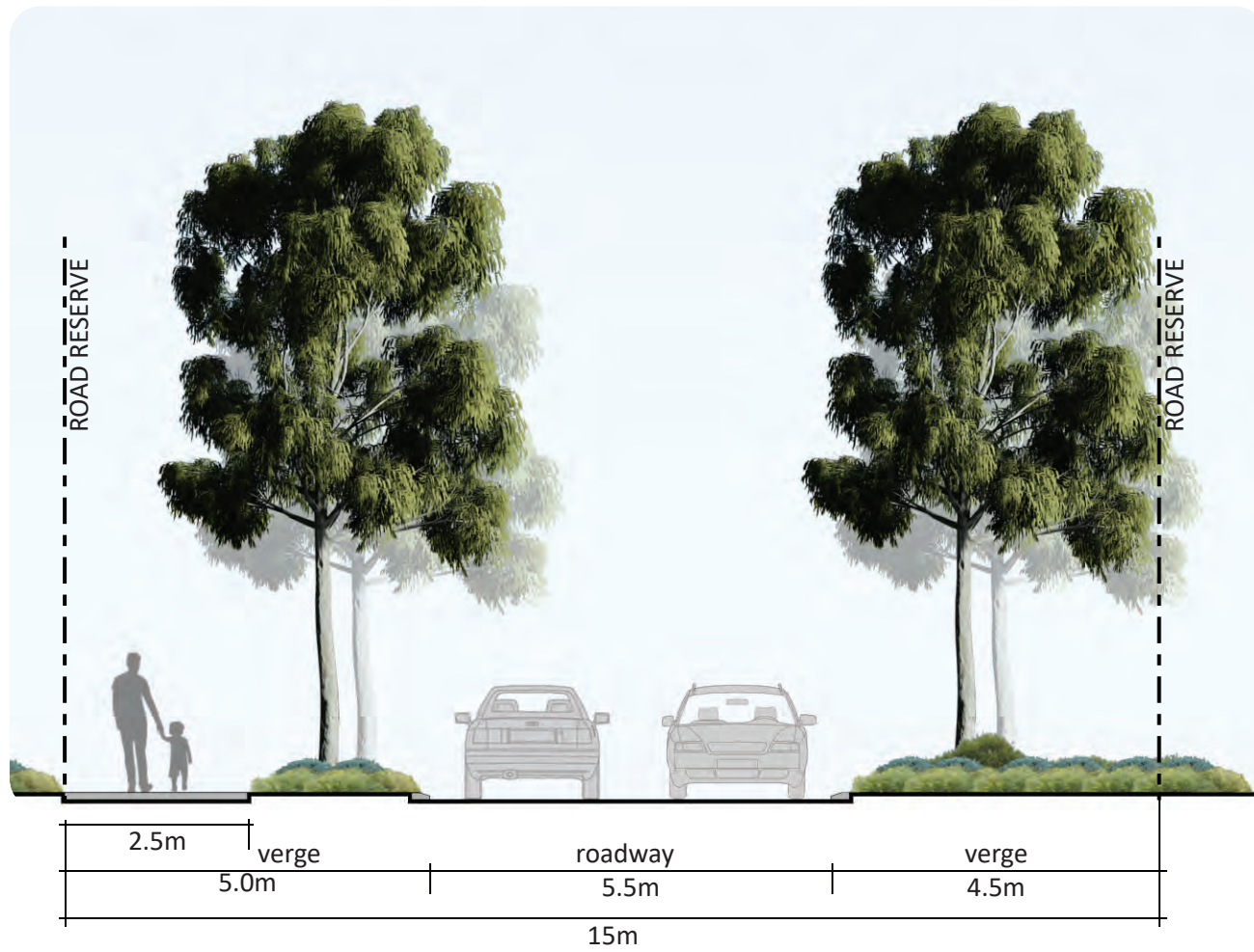


**NEIGHBOURHOOD CONNECTOR A (24m)**



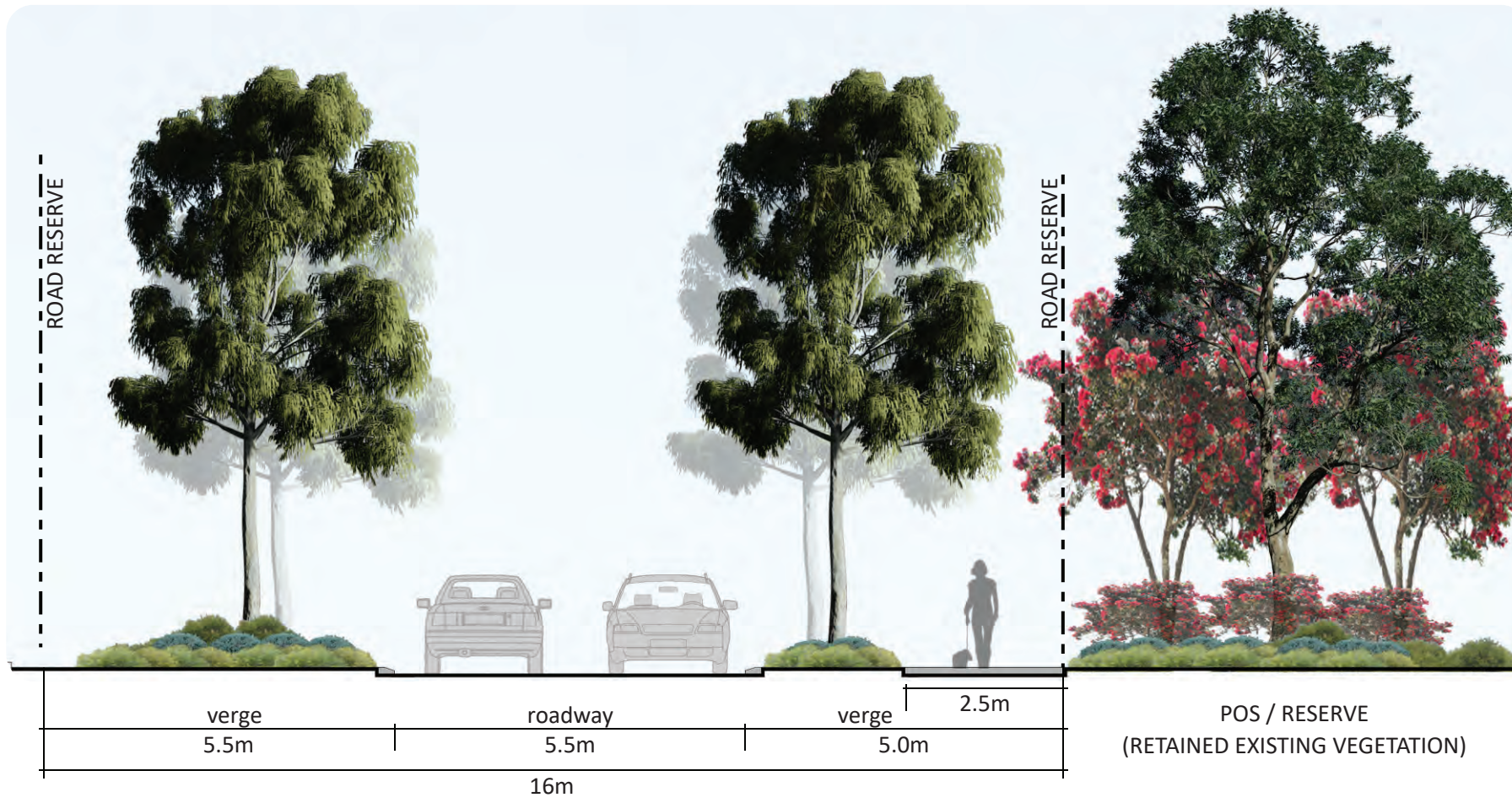


NEIGHBOURHOOD CONNECTOR B

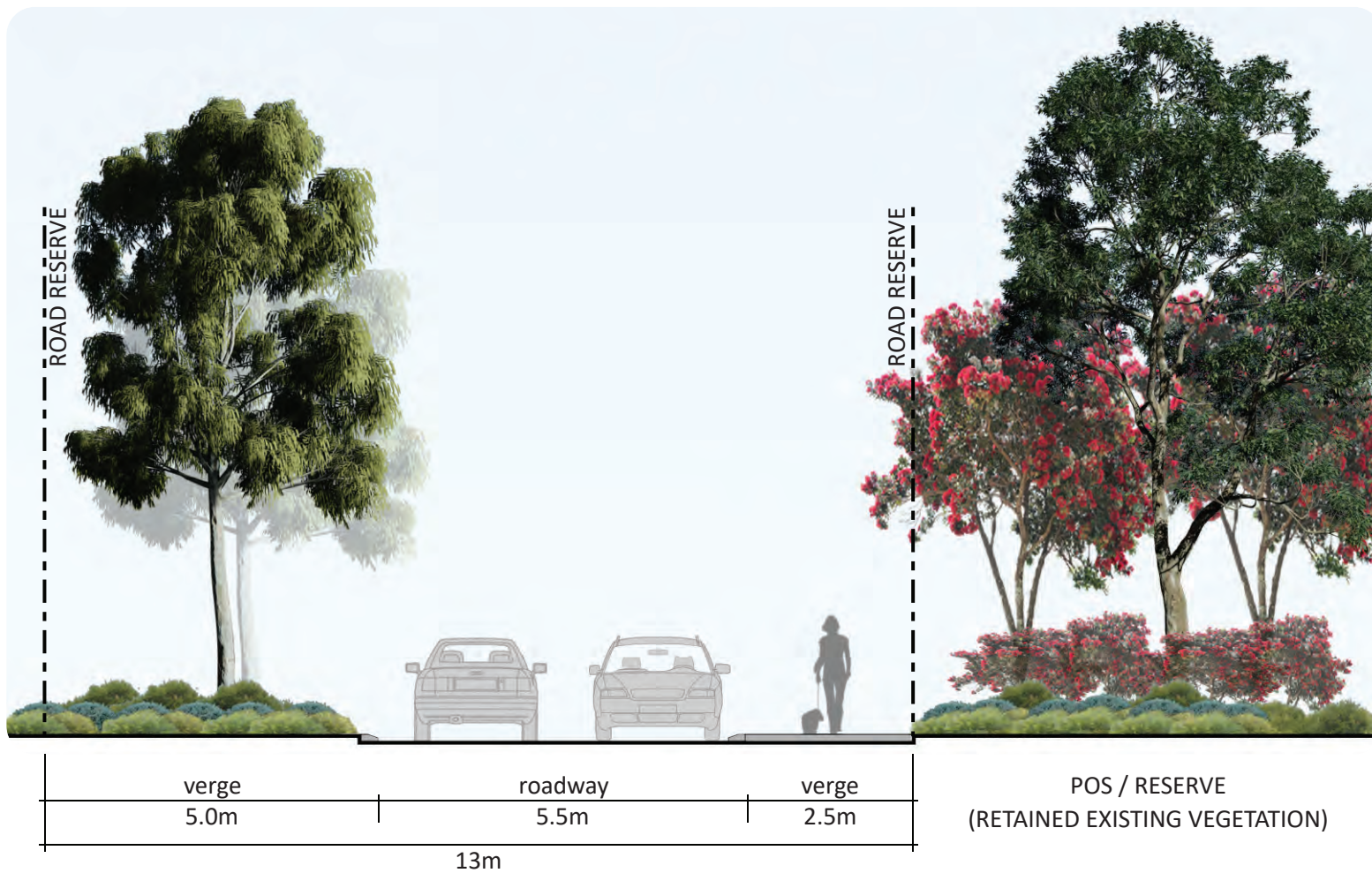


ACCESS STREET C/D (15m)





ACCESS STREET C/D (16m)



ACCESS STREET C/D (13m)



# 07. Softscape Planting

## Plant Species

### POS & Street Trees

(Indicative Species)

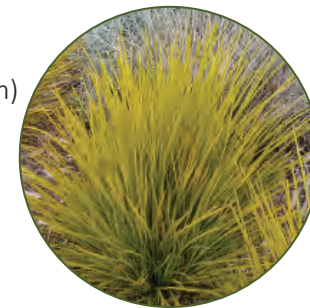
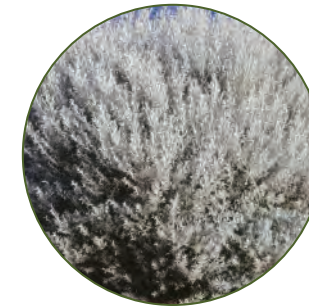
- Agonis flexuosa
- Allocasuarina fraseriana
- Bauhinia blakeana
- Callistemon citrinus
- Callistemon viminalis
- Corymbia callophylla
- Corymbia ficifolia
- Cupaniopsis anacardioides
- Delonix regia
- Erythrina sykesii
- Eucalyptus drummondii
- Eucalyptus erythrocorys
- Eucalyptus erythronema
- Eucalyptus forrestiana
- Eucalyptus gomphocephala
- Eucalyptus lehmannii
- Eucalyptus todtiana
- Eucalyptus torquata
- Eucalyptus torwood
- Eucalyptus utilis
- Eucalyptus victrix
- Eucalyptus woodwardii
- Jacaranda mimosifolia
- Melaleuca lanceolata
- Xanthorrhoea preissii



### Shrubs

(Indicative Species)

- Banksia ashbyi dwarf
- Banksia attenuata
- Banksia hookeriana
- Beaufortia aestiva
- Calothamnus hirsutus
- Conostylis candicans
- Dianella revoluta
- Eremophila nivea
- Grevillea preissii
- Hakea lissocarpa
- Hibbertia spp
- Hypocalymma robustum
- Kunzea baxteri
- Leucophyta brownii
- Lomandra longifolia
- Lomandra tanika
- Melaleuca conothamnoides
- Melaleuca huegelii
- Melaleuca incana (Little form)
- Melaleuca seriata
- Pimelea ferruginea
- Scaevola nitida
- Thryptomene baeckeacea
- Westringia dampieri





## Plant Species (cont.)

### Groundcovers

(Indicative Species)

- *Acacia saligna* (prostrate)
- *Carpobrotus virescens*
- *Eremophila glabra* (prostrate)
- *Grevillea 'Gin Gin Gem'*
- *Grevillea thelemanniana*
- *Grevillea crithmifolia* (prostrate)
- *Hemiandra pungens*
- *Hibbertia* spp
- *Kennedia prostrata*
- *Myoporum parvifolium*



### Sedge & Rushes

(Indicative Species)

- *Baumea articulata*
- *Baumea juncea*
- *Carex appressa*
- *Ficinia nodosa*
- *Juncus subsecundus*
- *Lepidosperma gladiatum*
- *Lomandra maritima*



### Revegetation

(Indicative Species)

- *Adenanthos cygnorum*
- *Agonis flexuosa*
- *Alexgeorgea nitens*
- *Allocasuarina fraseriana*
- *Banksia attenuata*
- *Banksia ilicifolia*
- *Banksia menziesii*
- *Calytrix fraseri*
- *Desmodcladus flexuosus*
- *Eucalyptus marginata*
- *Eucalyptus rudis*
- *Hibbertia hypericoides*
- *Jacksonia furcellata*
- *Jacksonia sternbergiana*
- *Kunzea glabrescens*
- *Lechenaultia floribunda*
- *Melaleuca preissiana*
- *Mesomelaena pseudostygia*
- *Verticordia densiflora*
- *Xanthorrhoea preissii*

